



# Dual Canopy Linear Pendant

## Install Guide



**Disclaimer :**

Installation, inspection, and maintenance should be performed by qualified electricians to mitigate risks of fire or electrical shock.





# Inspect Contents

NÖRSKA



2x Dual Canopy Assembly



Fixture Body



4x Anchor Screw



4x Drywall Anchor



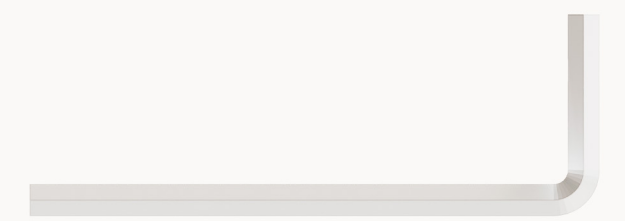
8x Set Screw



4x Machine Screw



3x Wire Connector



1x 2mm Allen Key



# Terminology & Tools Required

NÖRSKA



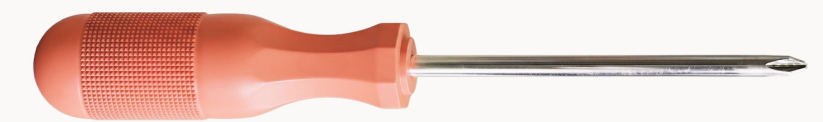
Drill  
(Not Included)



6mm / 0.25" Drill Bit  
(Not Included)



Barrel  
(Included)



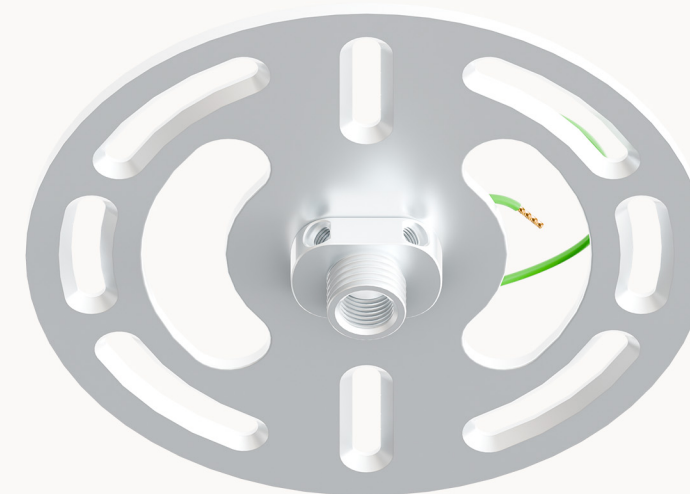
Phillip Screw Driver  
(Not Included)



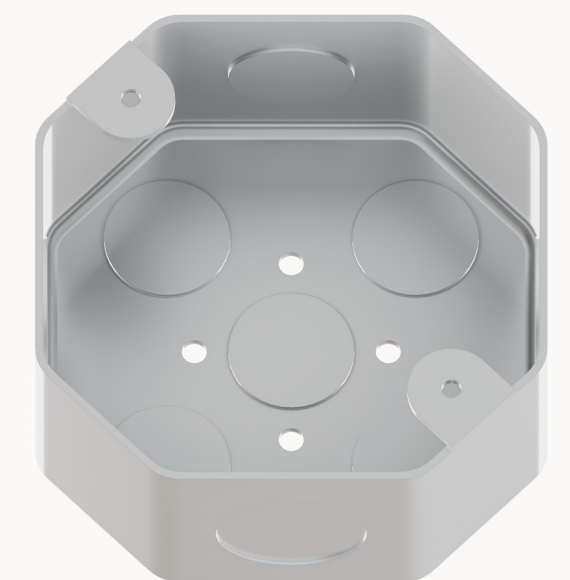
Measure Tape  
(Not Included)



Canopy  
(Included)



Crossbar  
(Included)



Junction Box  
(Not Included)



# Step 1

NÖRSKA

Unscrew the barrel from the crossbar. Then, remove the barrel and canopy from the crossbar.





## Step 2

NÖRSKA

Slide the barrel followed by the canopy onto each suspension cord.

**Note** : Ensure proper orientation of both the barrel and canopy.





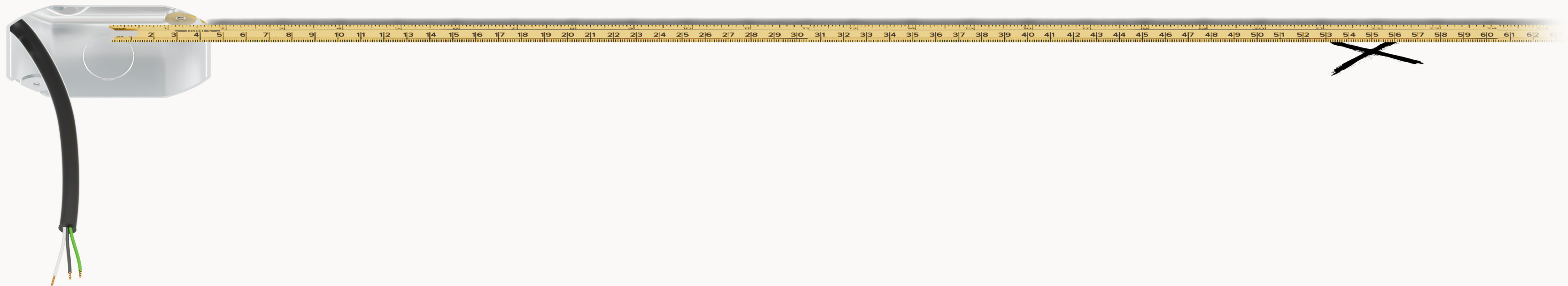
## Step 3

NÖRSKA

Measure 55cm (21.65") from the center of the powered junction box in the direction you would like the fixture to hang and leave a mark.

**Note** : If the linear pendant will be mounted using two junction boxes, this step may be omitted.

**Note** : For custom suspension spacing, measure and mark the specified spacing distance.





## Step 4

NÖRSKA

Using a crossbar as a guide, center the crossbar over the marked mounting location.  
Place two additional marks for mounting the crossbar to the ceiling.

**Note** : See install depiction for recommended mounting locations.





# Step 5

NÖRSKA

Using a 6mm (0.25") drill bit, predrill a hole at each marked mounting location.





## Step 6

NÖRSKA

Using a Philips screwdriver, screw one drywall anchor into each previously drilled mounting location. Ensure the drywall anchor is screwed in until flush with the drywall surface.

**Note** : Other commercially available anchors may be used. If using anchors not provided, ensure they allow for a minimum of a 30 lb load capacity each.

**Note** : If installing in other surfaces than drywall, ensure the anchor points can support a minimum of 30 lb each.





# Step 7

NÖRSKA

Set the desired hanging height by measuring from the junction box to the bottom of the fixture.





## Step 8

NÖRSKA

Thread the suspension cord through the crossbar. Then, secure the cord at the desired hanging height using the four set screws.

**Note** : Ensure proper orientation of the crossbar, with the strain relief pointing down.

**Caution** : Do not overtighten the set screws, as damage to the cord can occur.





# Step 9

NÖRSKA

Trim the mesh cord to 1/2" above the crossbar. Then, trim the internal conductors to 8" beyond the crossbar.

**Note** : Open the mesh cord at the seam using needle nose pliers. Cut the mesh to length with diagonal cutting pliers, then press the mesh back into shape around the internal conductors.

**Note** : The power cable will have exposed internal wires on the end and be labeled "Power".  
The suspension cable will have no exposed wires and be labeled "Suspension".

**Caution** : Do not damage the internal conductors when trimming the cord.





# Step 10

NÖRSKA

Mount the suspension crossbar to the ceiling by screwing the anchor screws into the previously positioned drywall anchors.

**Note** : If using two junction boxes, this step may be omitted.





# Step 11

NÖRSKA

Slide the canopy and barrel up the suspension cord. Then, thread the barrel onto the crossbar strain relief to secure the canopy in place.





# Step 12

NÖRSKA

Mount the crossbar to the junction box using the provided machine screws.

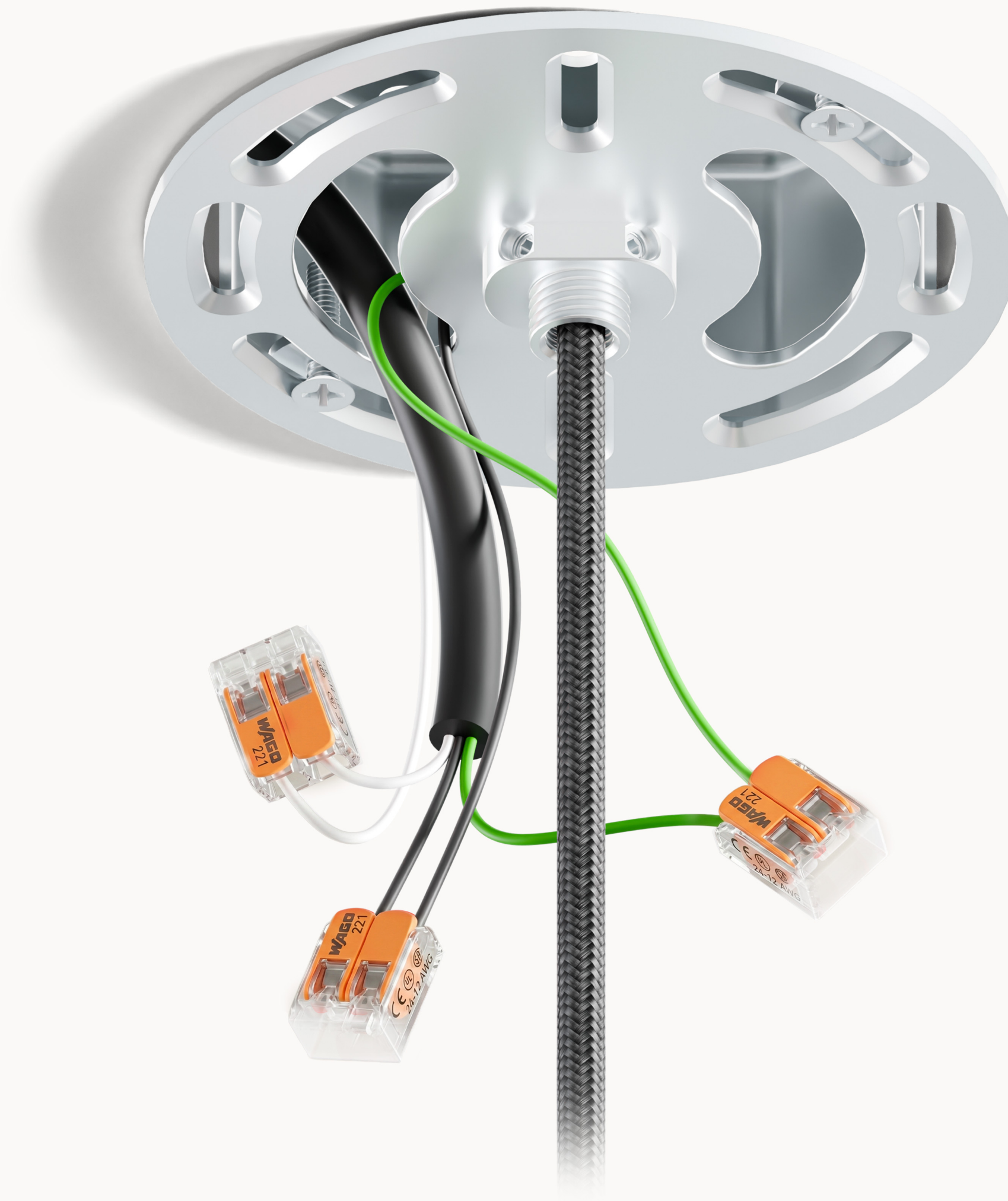




## Step 13

NÖRSKA

Connect the fixture ground wire to the ground wire from the junction box. Then, connect the remaining fixture wires to the corresponding wires from the junction box using provided wire connectors. Carefully tuck all wires into the junction box.





## Step 14

NÖRSKA

Slide the canopy and barrel up the suspension cord. Then, thread the barrel onto the crossbar strain relief to secure the canopy in place.

