



Continuous Canopy Linear Pendant

Install Guide



Disclaimer :

Installation, inspection, and maintenance should be performed by qualified electricians to mitigate risks of fire or electrical shock.





Inspect Contents

NÖRSKA



Continuous Canopy Assembly



Fixture Body



4x Anchor Screw



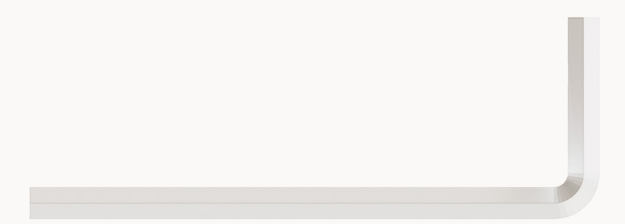
4x Drywall Anchor



8x Set Screw



3x Wire Connector



1x 2mm Allen Key



Terminology & Tools Required

NÖRSKA



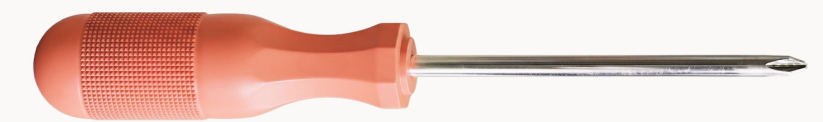
Drill
(Not Included)



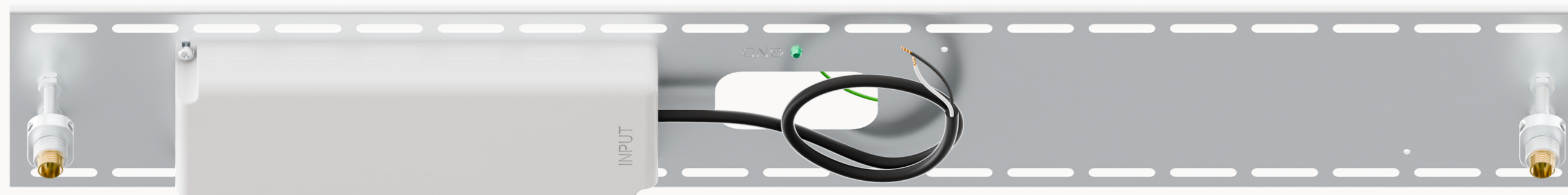
6mm / 0.25" Drill Bit
(Not Included)



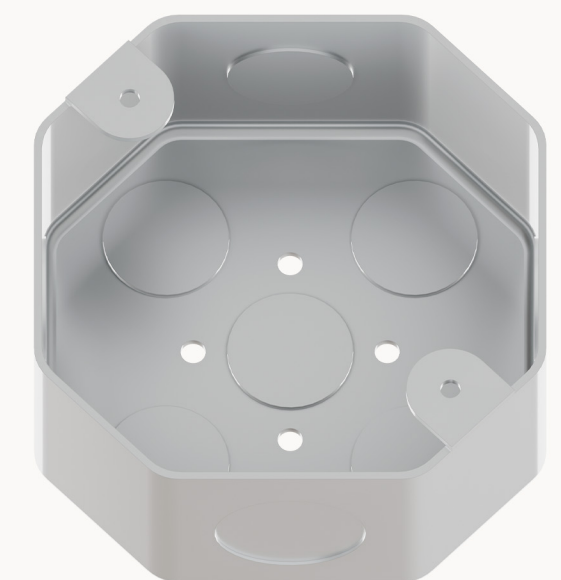
Barrel
(Included)



Phillip Screw Driver
(Not Included)



Mounting Bracket / Driver Assembly
(Included)



Junction Box
(Not Included)



Step 1

NÖRSKA

Unscrew the barrels from the canopy assembly. Then, carefully remove the canopy from the mounting bracket.





Step 2

NÖRSKA

Thread one barrel onto each suspension cable.

Note : Ensure the orientation of the barrels matches the install depiction.





Step 3

NÖRSKA

Thread the continuous canopy onto the suspension cables and carry it down until it is resting on the fixture body.

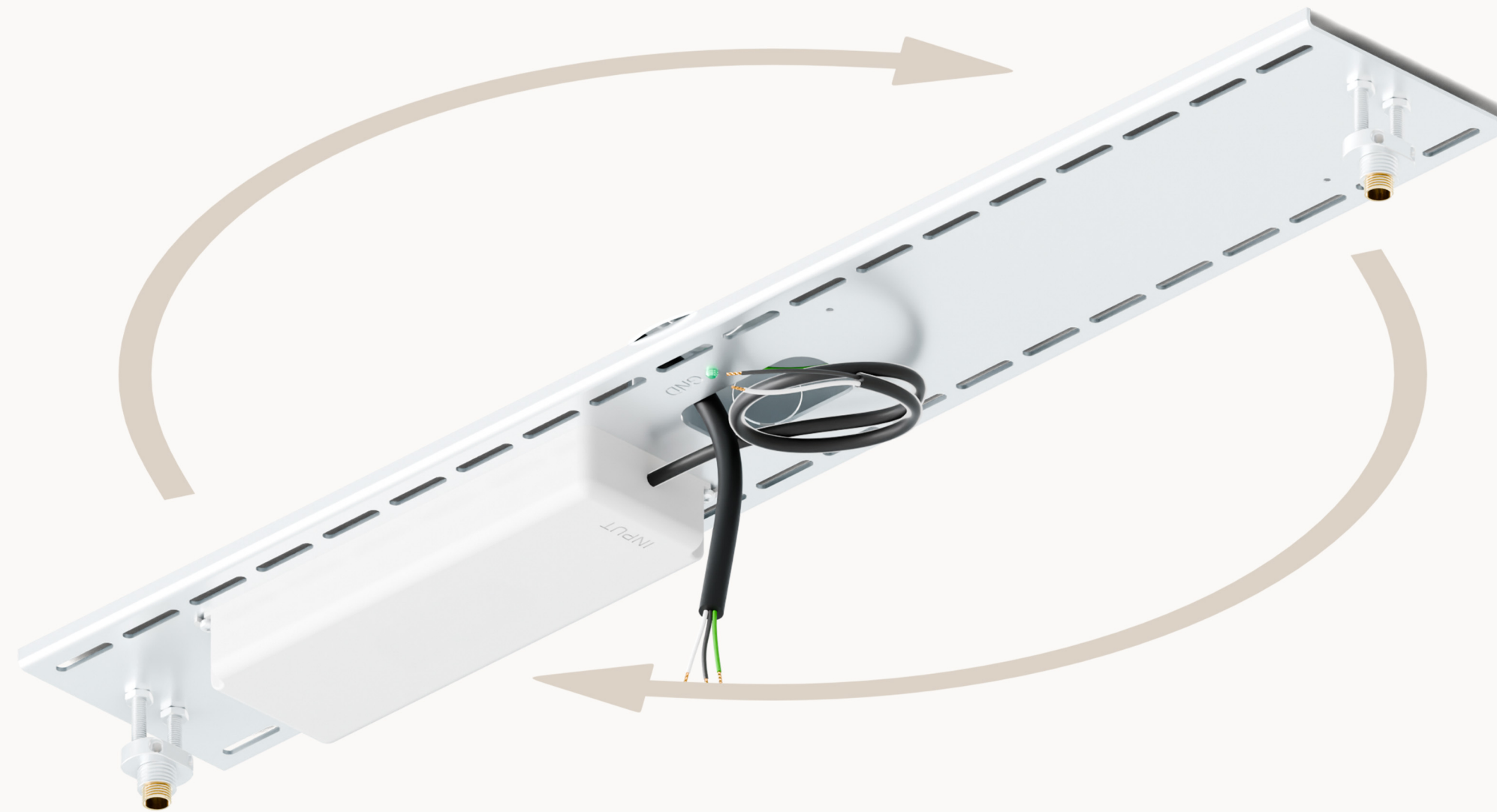




Step 4

Place the mounting bracket over the junction box in the orientation you'd like the fixture to hang. Mark four mounting locations using the bracket as a guide. Holes to be used for mounting are depicted below.

Note : If possible ensure that the holes closest to either end are utilized for mounting.





Step 5

NÖRSKA

Using a 6mm (0.25") drill bit, predrill a hole at each marked mounting location.





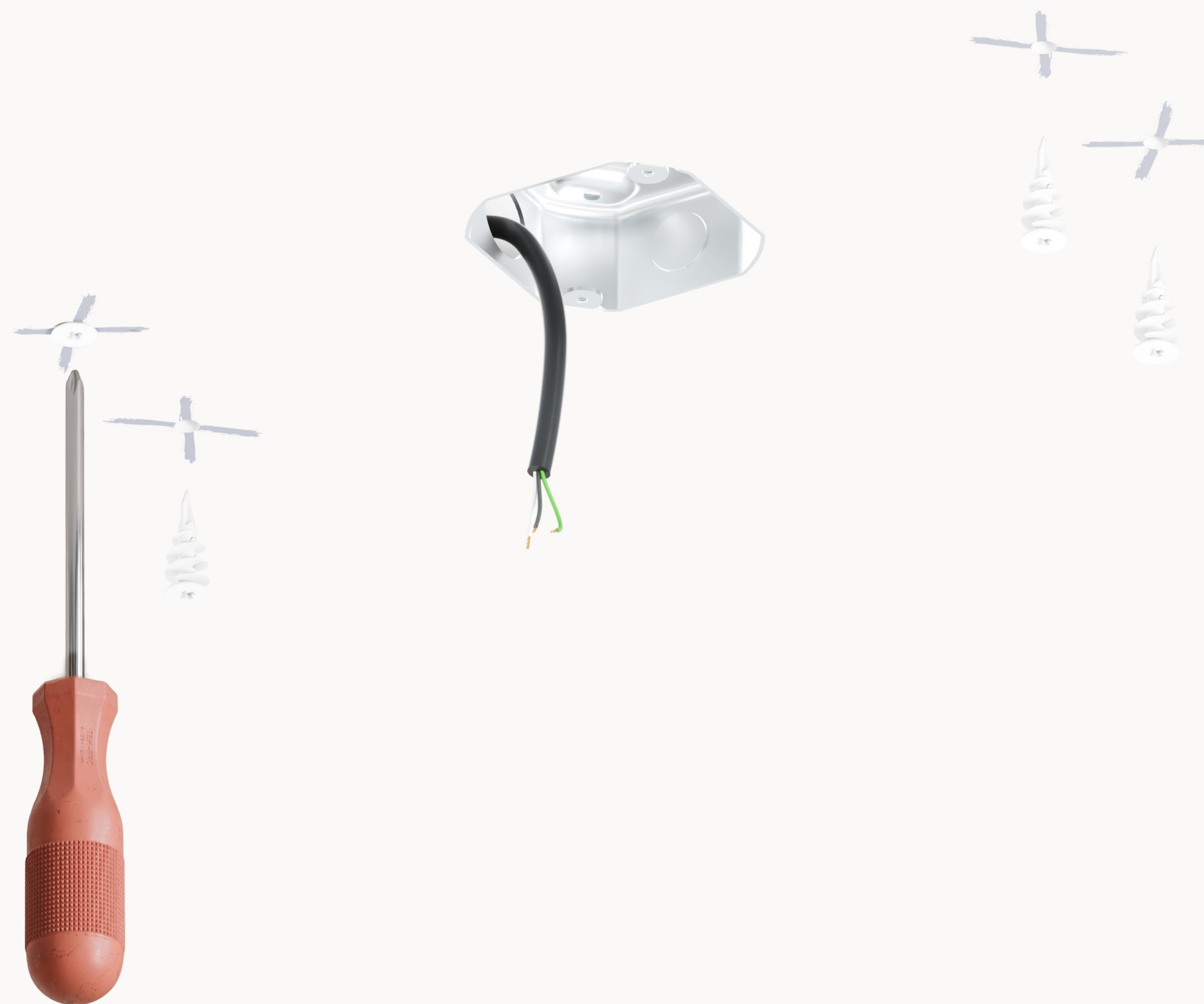
Step 6

NÖRSKA

Using a Philips screwdriver, screw one drywall anchor into each previously drilled mounting location. Ensure the drywall anchor is screwed in until flush with the drywall surface.

Note : Other commercially available anchors may be used. If using anchors not provided, ensure they allow for a minimum of a 30 lb load capacity each.

Note : If installing in other surfaces than drywall, ensure the anchor points can support a minimum of 30 lb each.





Step 7

NÖRSKA

Secure the mounting bracket to the ceiling by screwing the four mounting screws into the previously placed drywall anchors.

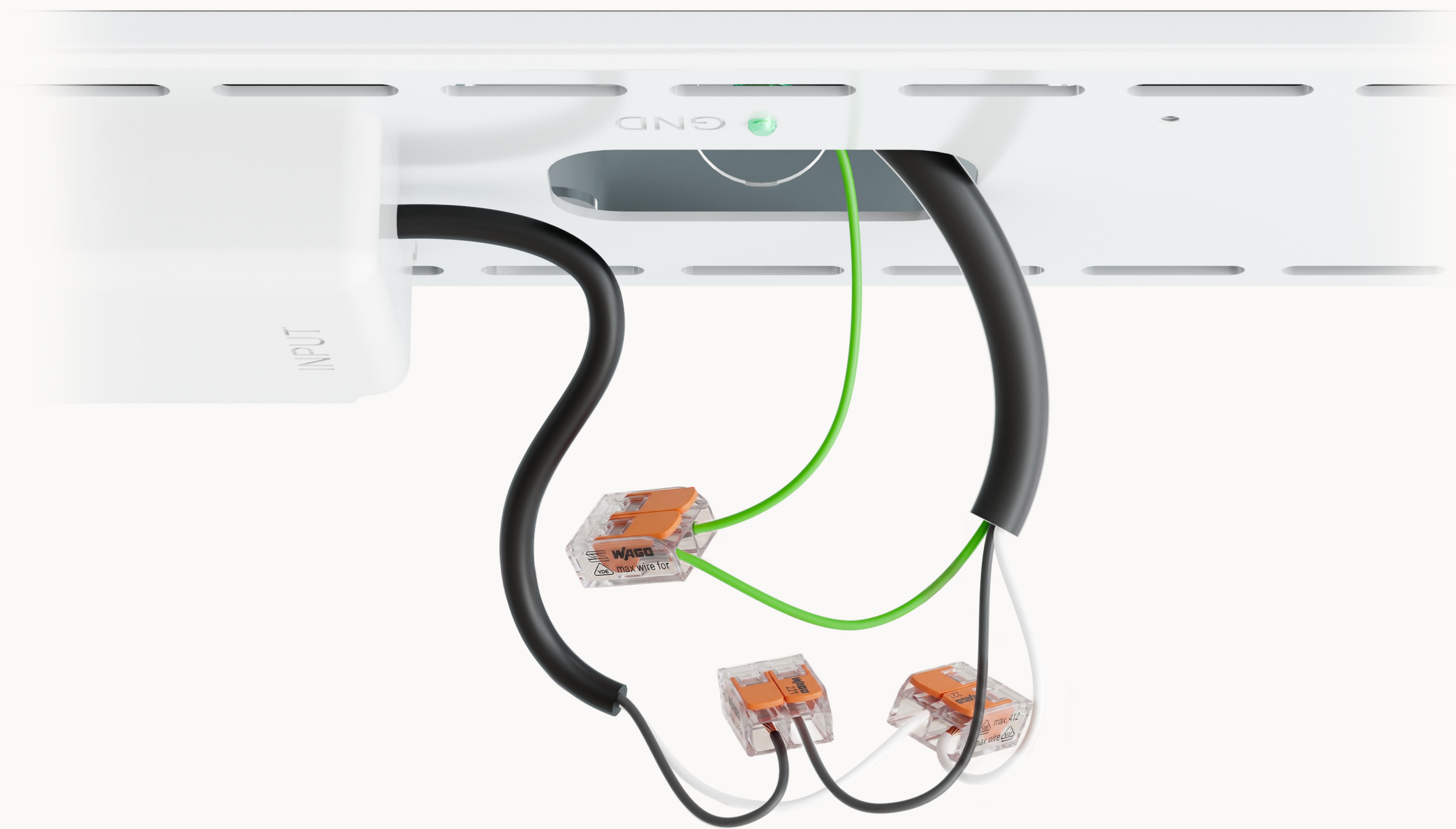




Step 8

NÖRSKA

Connect the ground wire from the mounting bracket to the ground wire from the junction box using a wire connector. Then, connect the wires from the driver power cord to the wires from the junction box using wire connectors.





Step 9

NÖRSKA

Ensure the proper hanging height by measuring the length of the top of the ceiling to the bottom of the fixture.



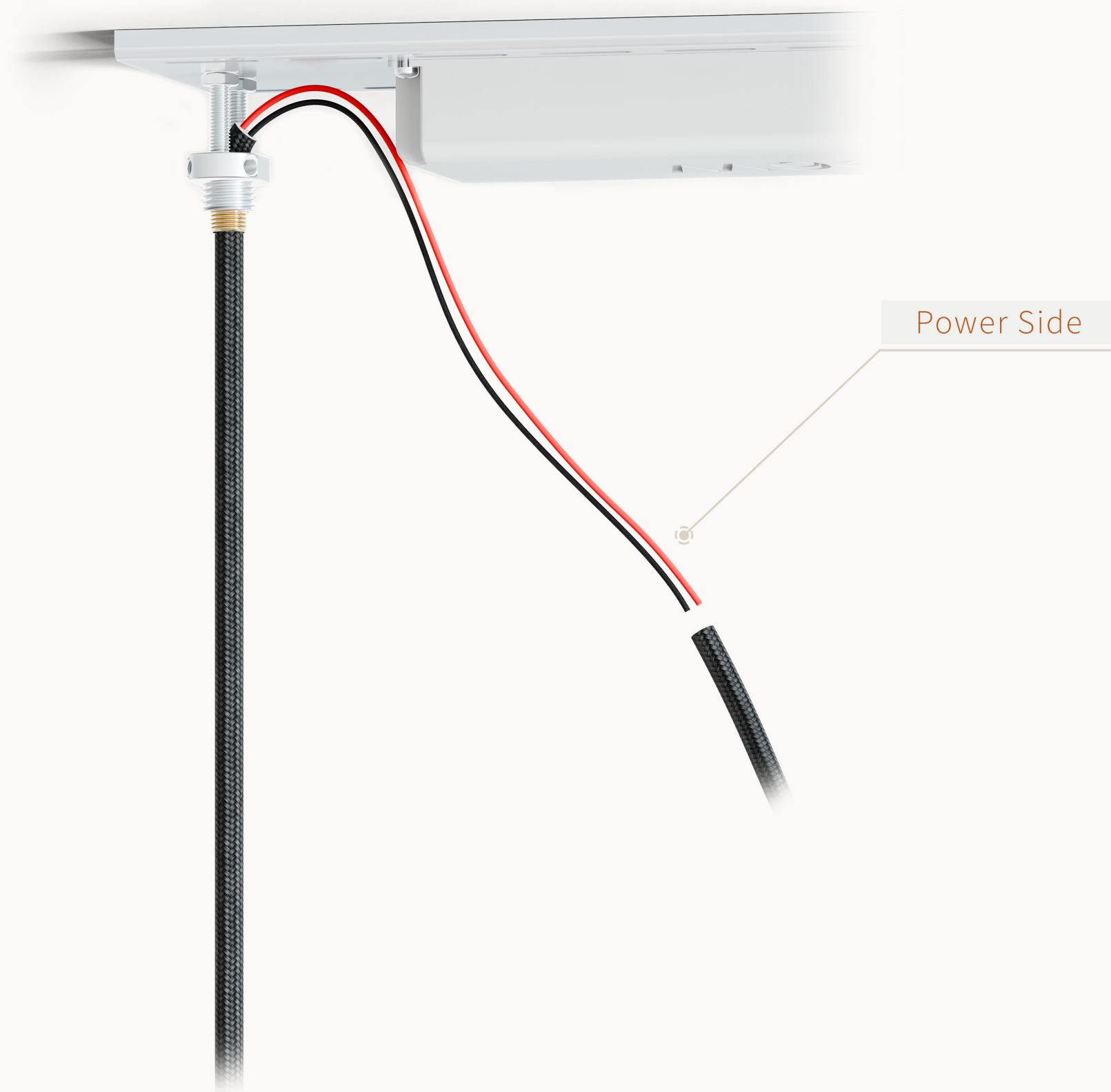


Step 10

NÖRSKA

Thread the suspension cables through the strain reliefs, with the excess cable exiting toward the center of the mounting bracket. Orient the fixture so the powered suspension cord enters next to the driver.

Note : For fixtures with two drivers, both suspension cords will be powered. For fixtures with one driver, only one suspension cord will be powered.





Step 11

NÖRSKA

Once the desired hanging height has been set, secure each suspension cord using four set screws on each strain relief.

Caution : Do not overtighten the set screws, as this may damage the suspension cord and internal conductors.

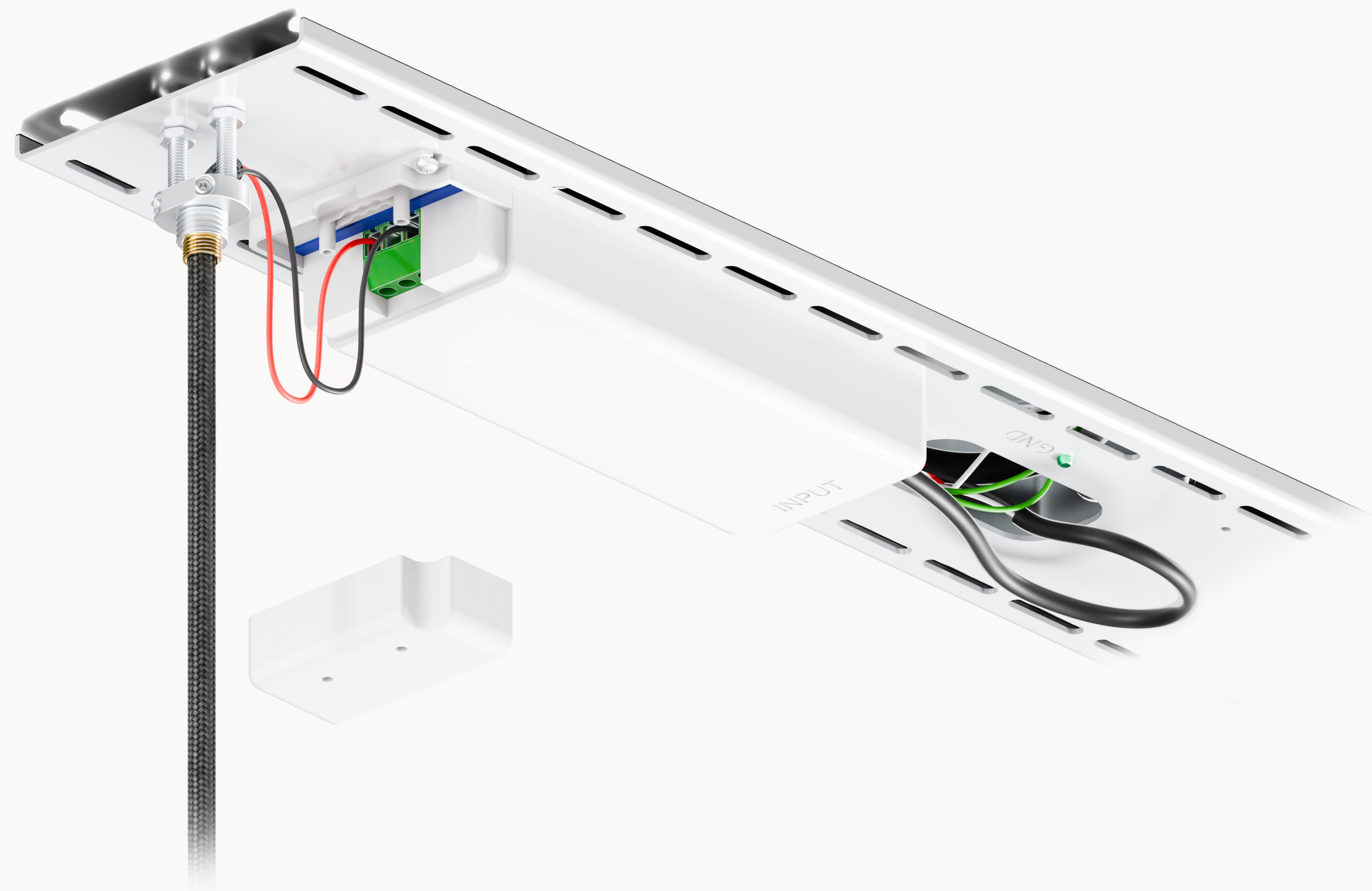




Step 12

NÖRSKA

Remove the end cap on the output side of the LED driver. Connect the red conductor to the (+) terminal and the black conductor to the (-) terminal. Then, resecure the end cap to lock the conductors in place.





Step 13

NÖRSKA

Carry the continuous canopy up the suspension cords and over the mounting bracket. Secure the continuous canopy in place by threading the barrels onto the continuous canopy strain reliefs.

