



Wall & Ceiling Sconce

Install Guide



DISCLAIMER :

Installation, inspection, and maintenance should be performed by qualified electricians to mitigate risks of fire or electrical shock.





Inspect Contents

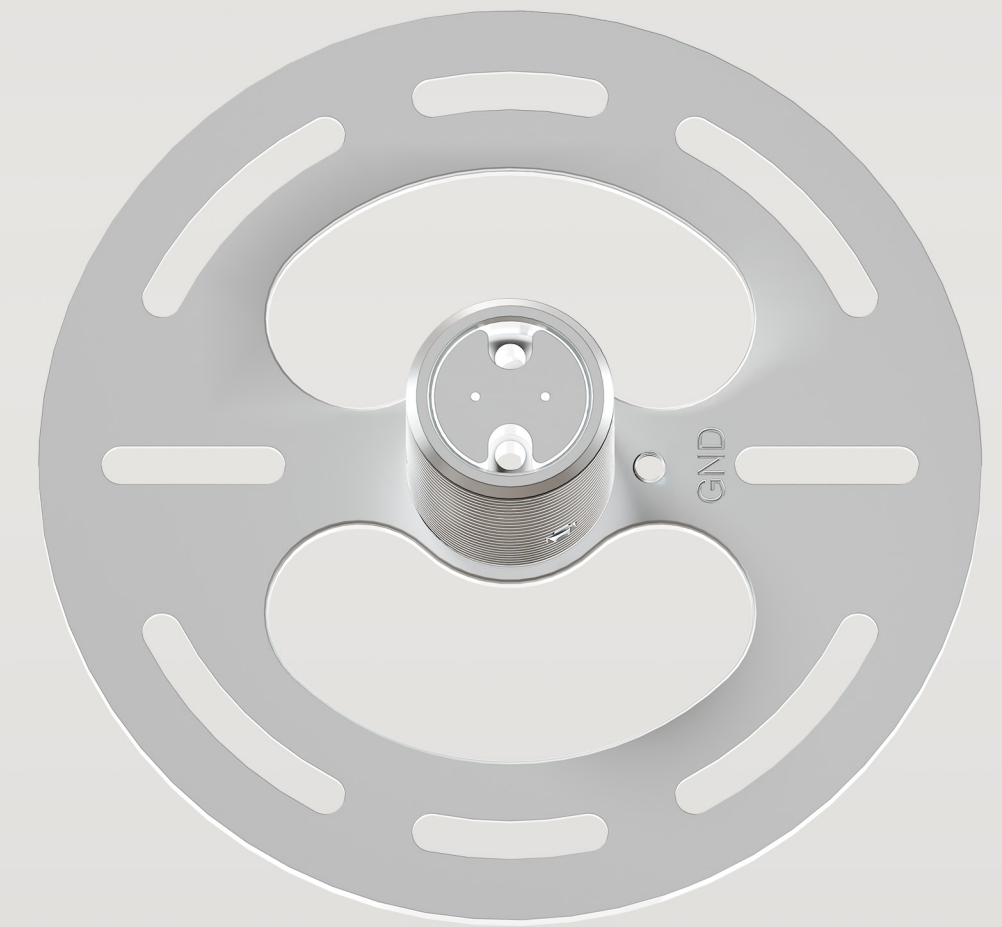
NÖRSKA



1x Glass Globe



1x Wood Canopy



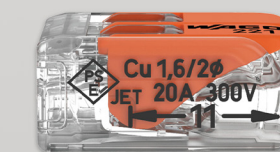
1x Fixture



1x Light Bulb (Bi-Pin)



2x Machine Screws



3x WAGO Wire Connector



Terminology & Tools Required

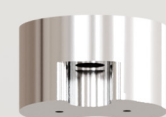
NÖRSKA

Tools Needed :



Phillip Screw Driver
(not included)

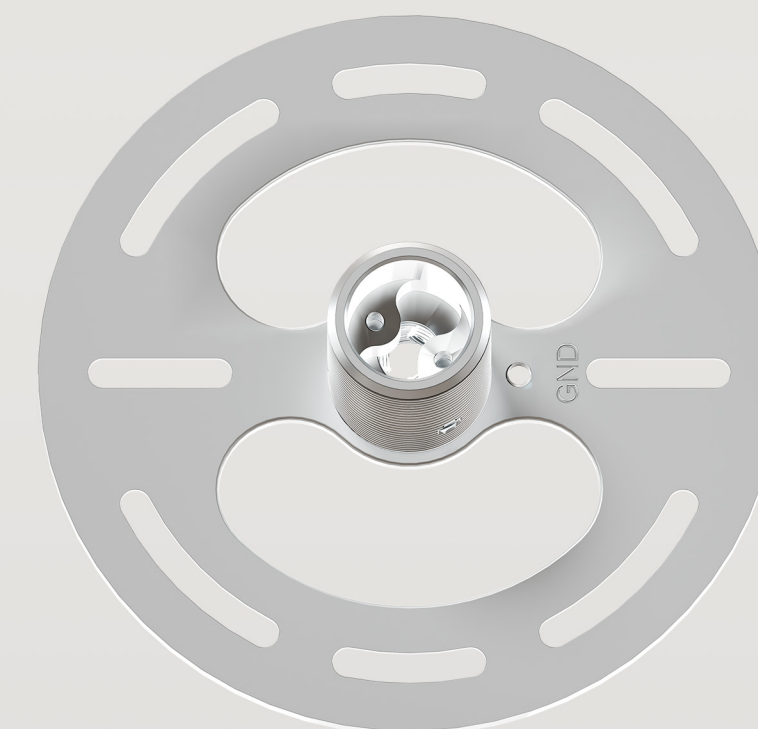
Components :



Fixture Socket



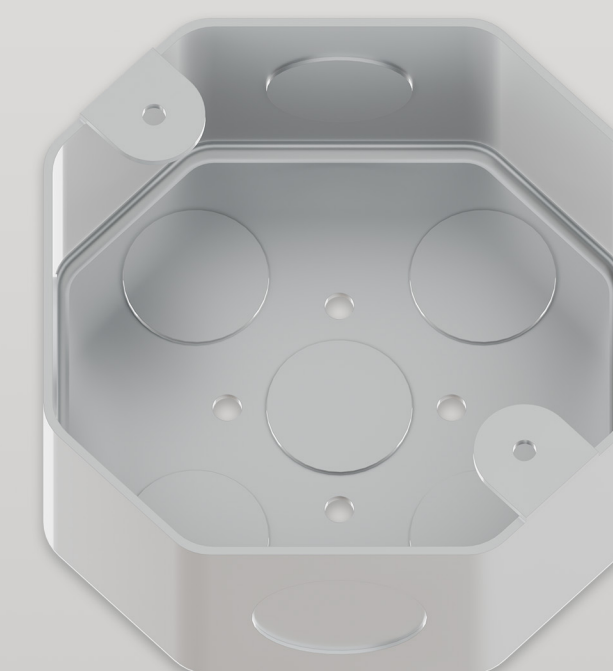
Wood Canopy



Crossbar



Glass Globe



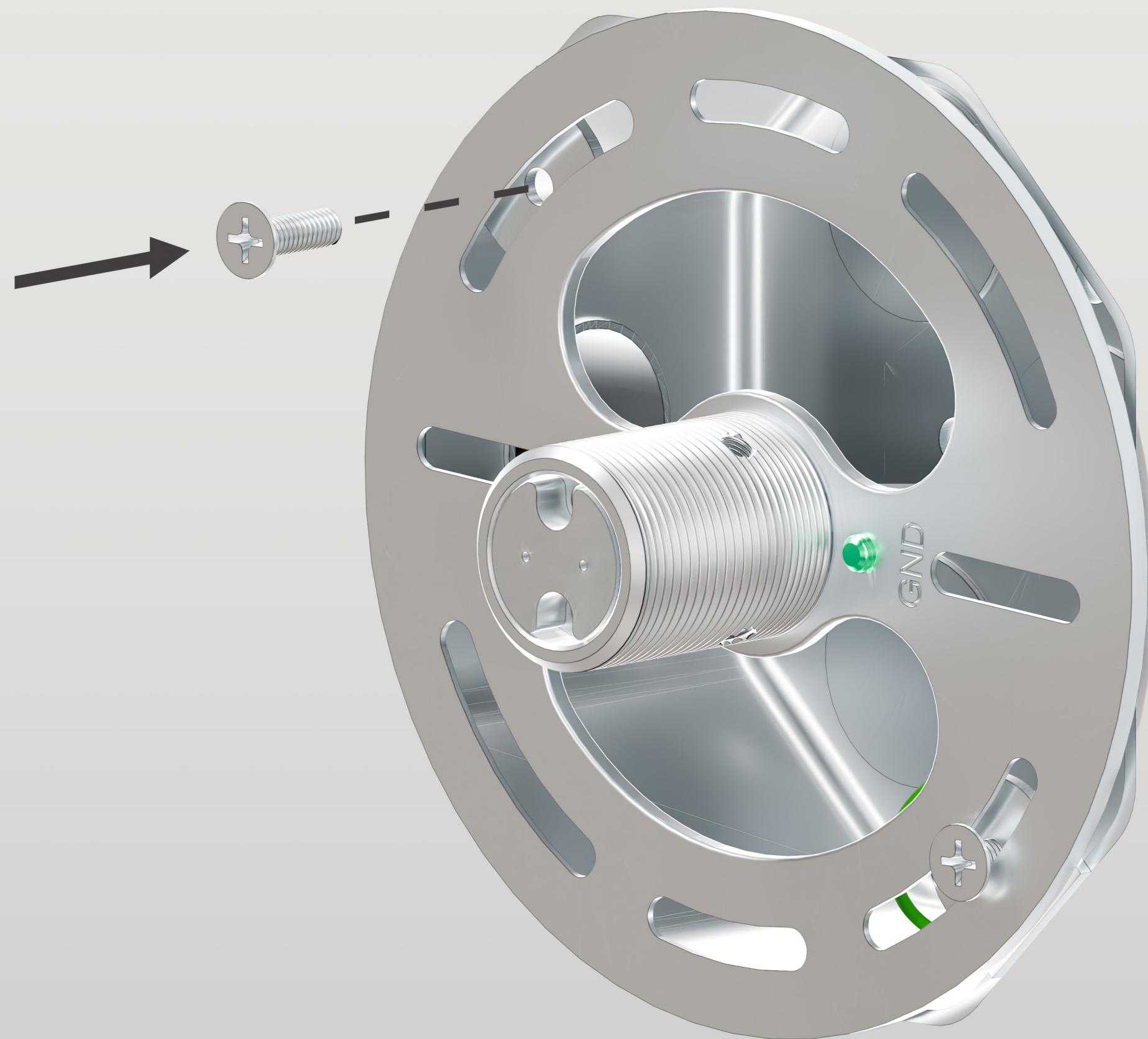
Junction Box
(not included)



Step 1

NÖRSKA

Secure the fixture crossbar to the junction box using the provided machine screws.

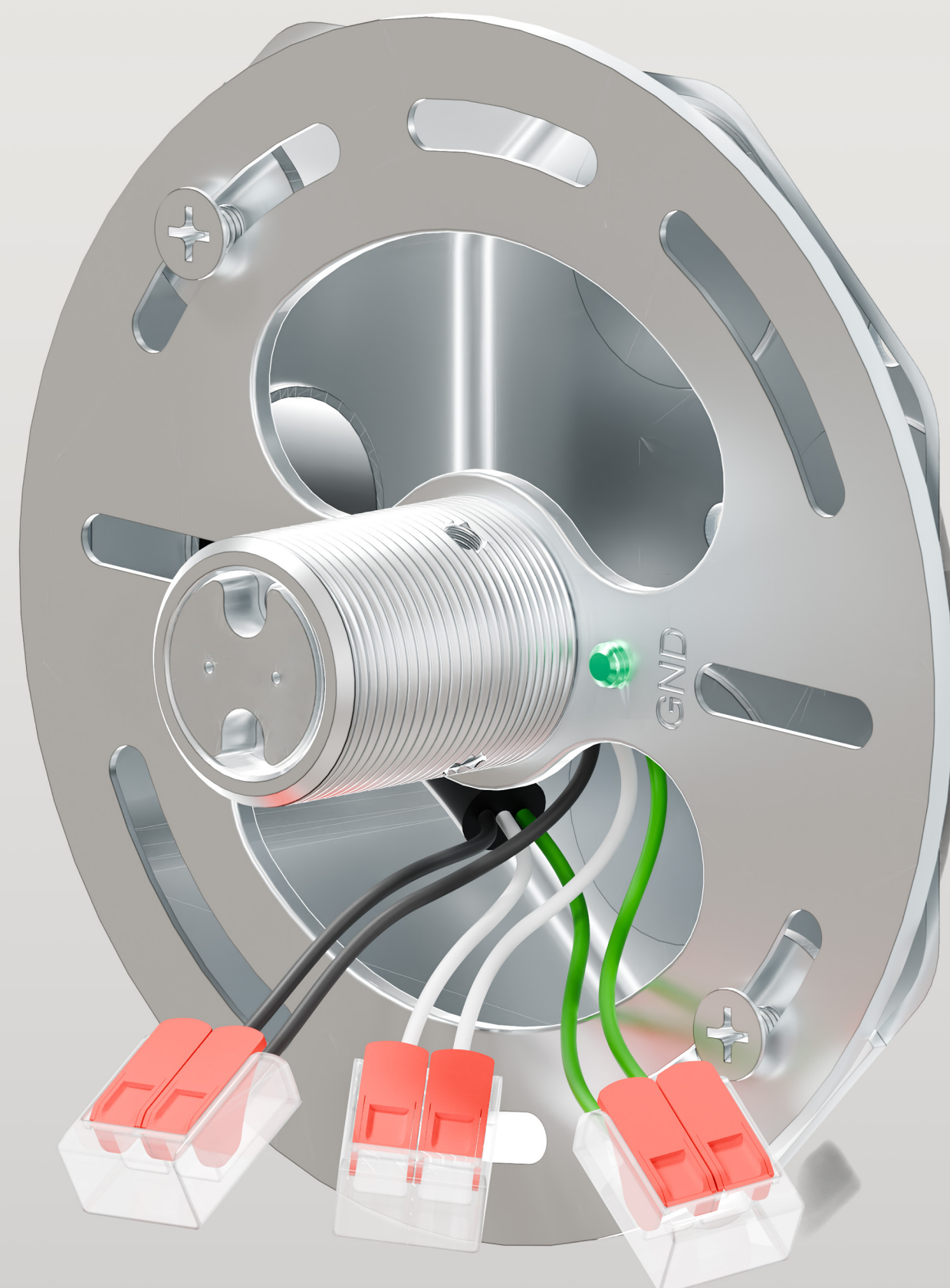




Step 2

NÖRSKA

Connect the fixture wires to the junction box wires using the provided WAGO connectors or UL-listed wire nuts.

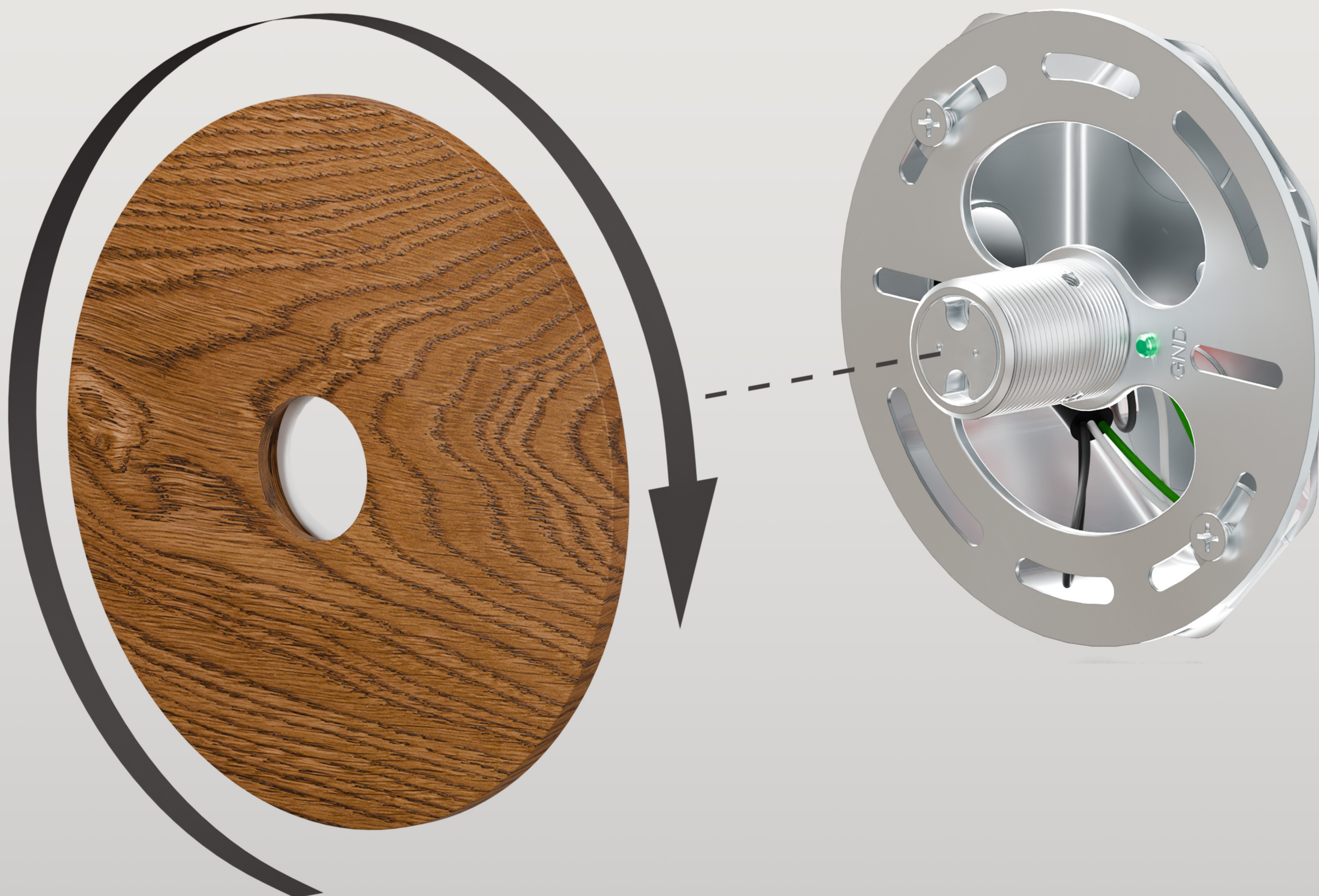




Step 3

NÖRSKA

Carefully screw the wooden canopy onto the socket sleeve, covering the junction box and wiring. Ensure the canopy sits flush against the ceiling or wall surface.



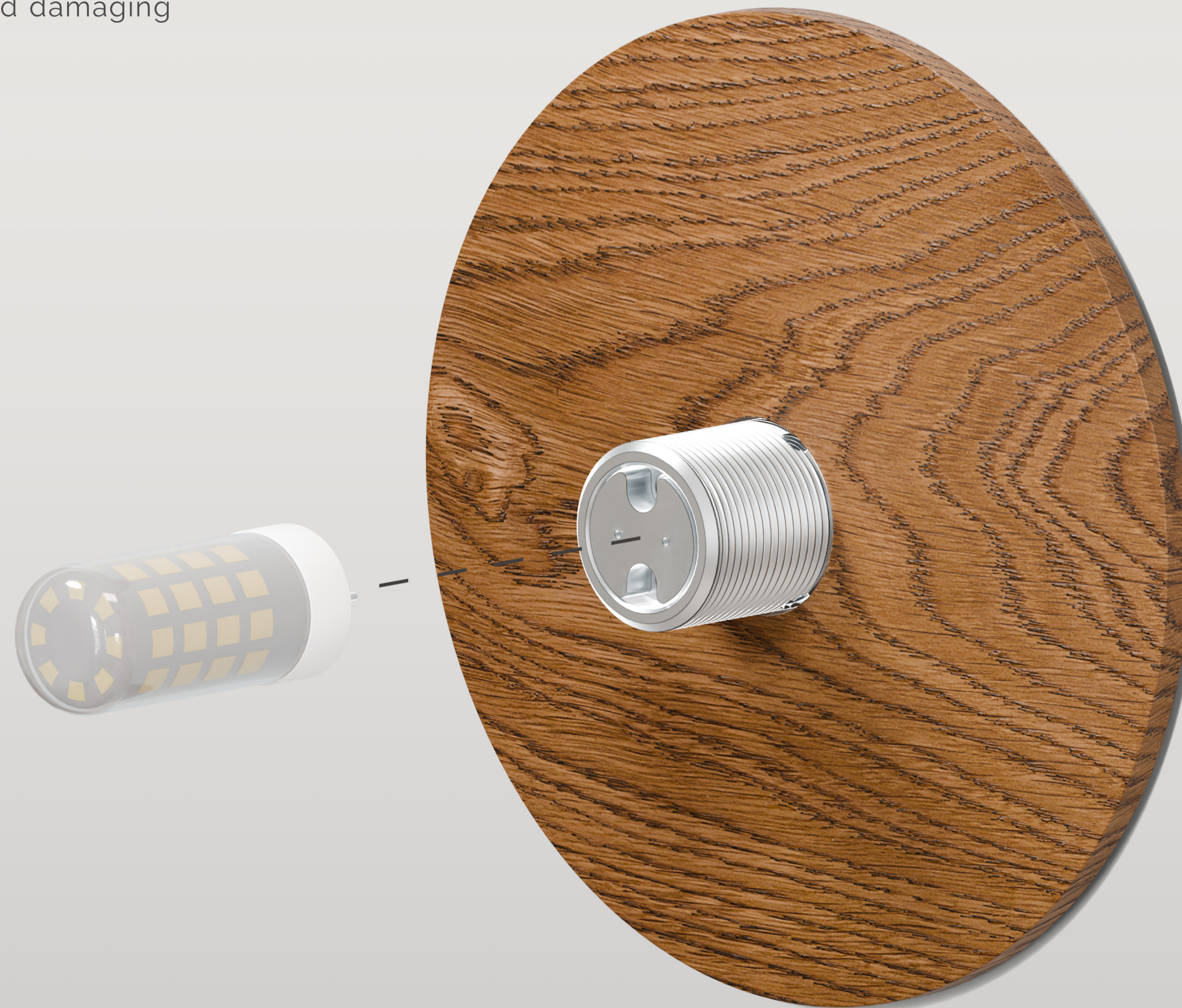


Step 4

NÖRSKA

Gently install the Bi-Pin bulb into the fixture socket.

Note : Align the Bi-Pin legs properly with the socket holes and press in evenly to avoid damaging the pins or socket.





Step 5

NÖRSKA

Align the glass threads with the socket cover threads and rotate slowly until secure.

Note : Avoid cross-threading. Do not overtighten, as this may damage the glass or the fixture.

