



# Pendant

## Install Guide



**DISCLAIMER :**

Installation, inspection, and maintenance should be performed by qualified electricians to mitigate risks of fire or electrical shock.







# Inspect Contents

NÖRSKA



Lamp body



1x 75mm Glass Globe



2x Barrel



2x Cup Cable Grip



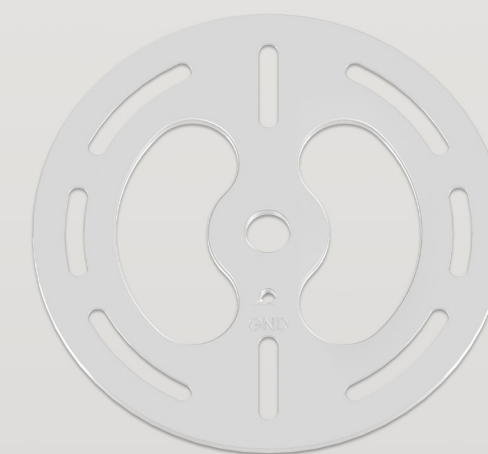
2x 8 - 32 Machine Screw



2x Anchor Screw



2x Drywall Anchor



1x Universal Mounting Plate



1x Cup



1x Ground Screw



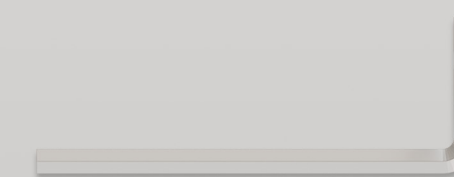
3x Set Screws



3x Wire Connectors



1x Ground Wire



1.5mm Allen Key



# Terminology & Tools Required

NÖRSKA

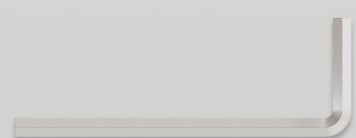
## Tools Needed :



Phillip Screw Driver



Drill with 3/16" Drill Bit

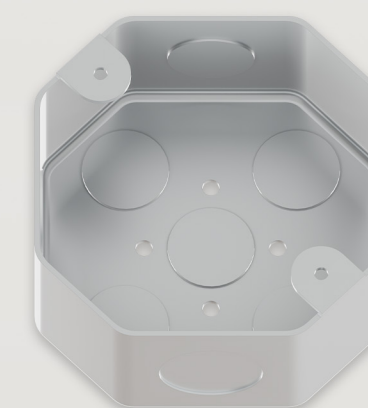


1.5mm Allen Key

## Components :



Strain Relief (Cable Grip)



Junction Box



Fixture Socket



Lamp Body



75mm Glass Globe



Socket Sleeve



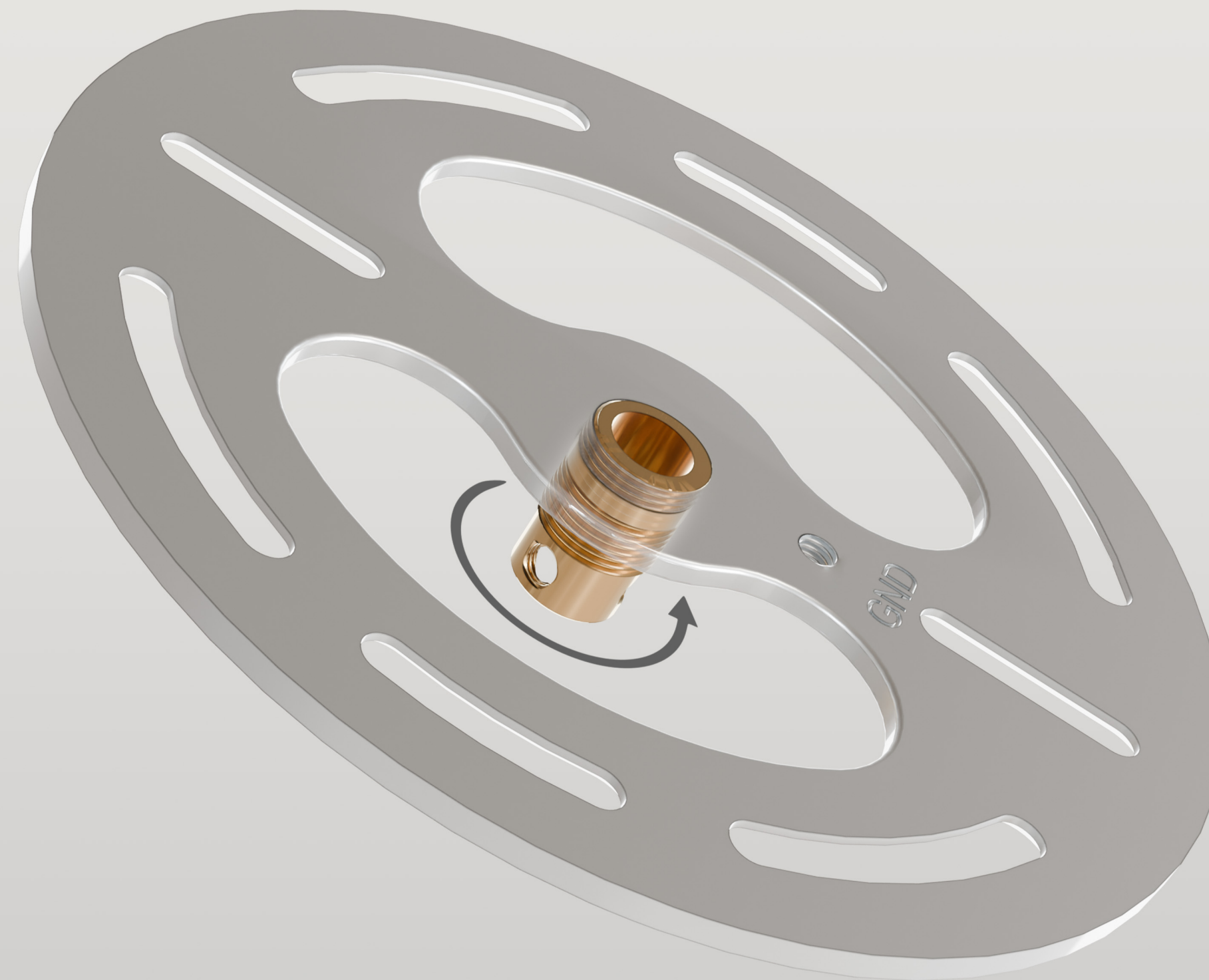


## Step 1

NÖRSKA

Screw the cable grip into the universal mounting plate.

**Note** : Ensure the universal mounting plate is oriented correctly, as shown in the installation diagram.







## Step 2

NÖRSKA

Thread the barrel, followed by the cup, onto the suspension cable.

**Note** : Ensure the orientation of both the barrel and the cup matches the install depiction.







## Step 3

NÖRSKA

Thread the suspension cable through the cable grip on the universal mounting plate. Secure the cable at the desired hanging height using the three set screws.

**Note :** Do not overtighten the set screws, as this may damage the internal wires. Tighten only until they are flush with the cable grip.



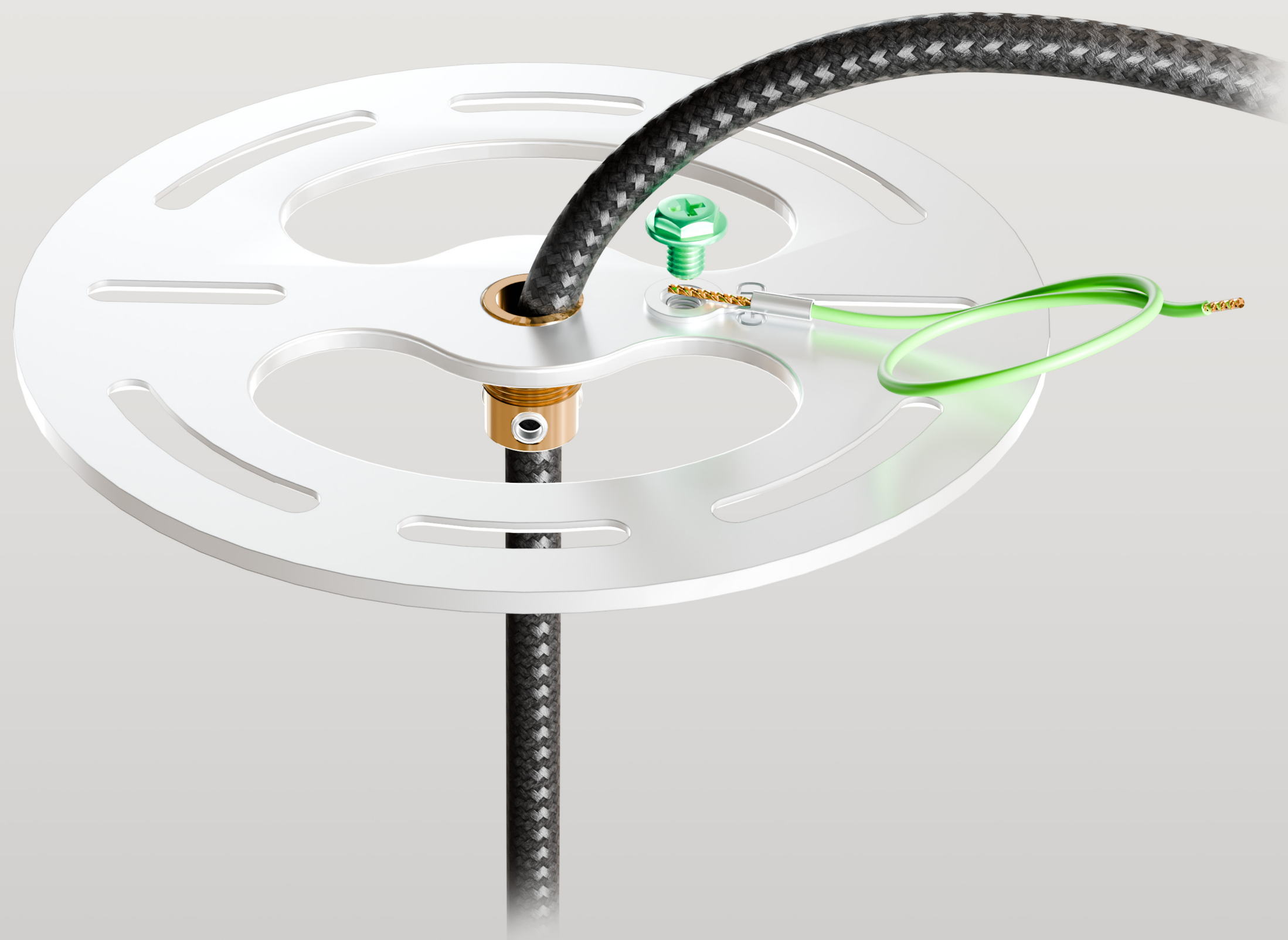




## Step 4

NÖRSKA

Attach the ground wire to the universal mounting plate using the provided M4 ground screw.

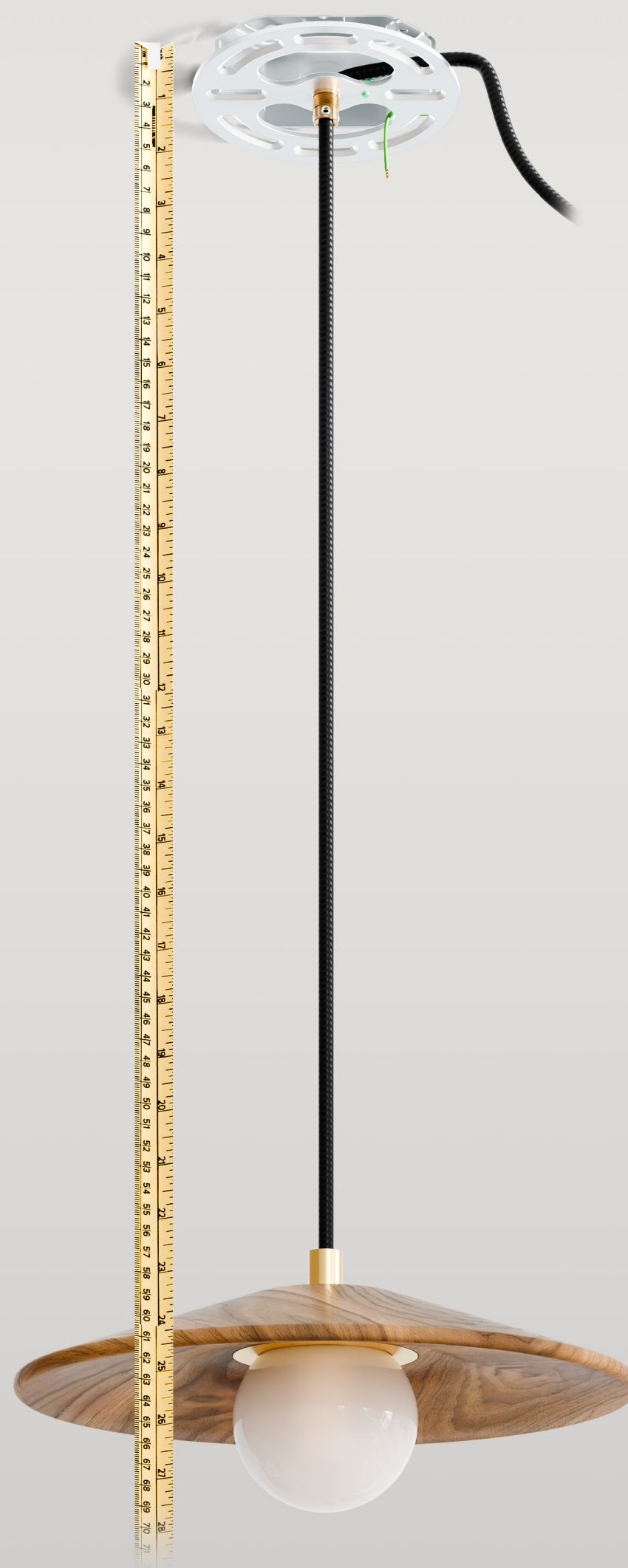






## Step 5

Verify the correct hanging height by measuring from the top of the universal mounting plate to the bottom of the fixture.



# NÖRSKA



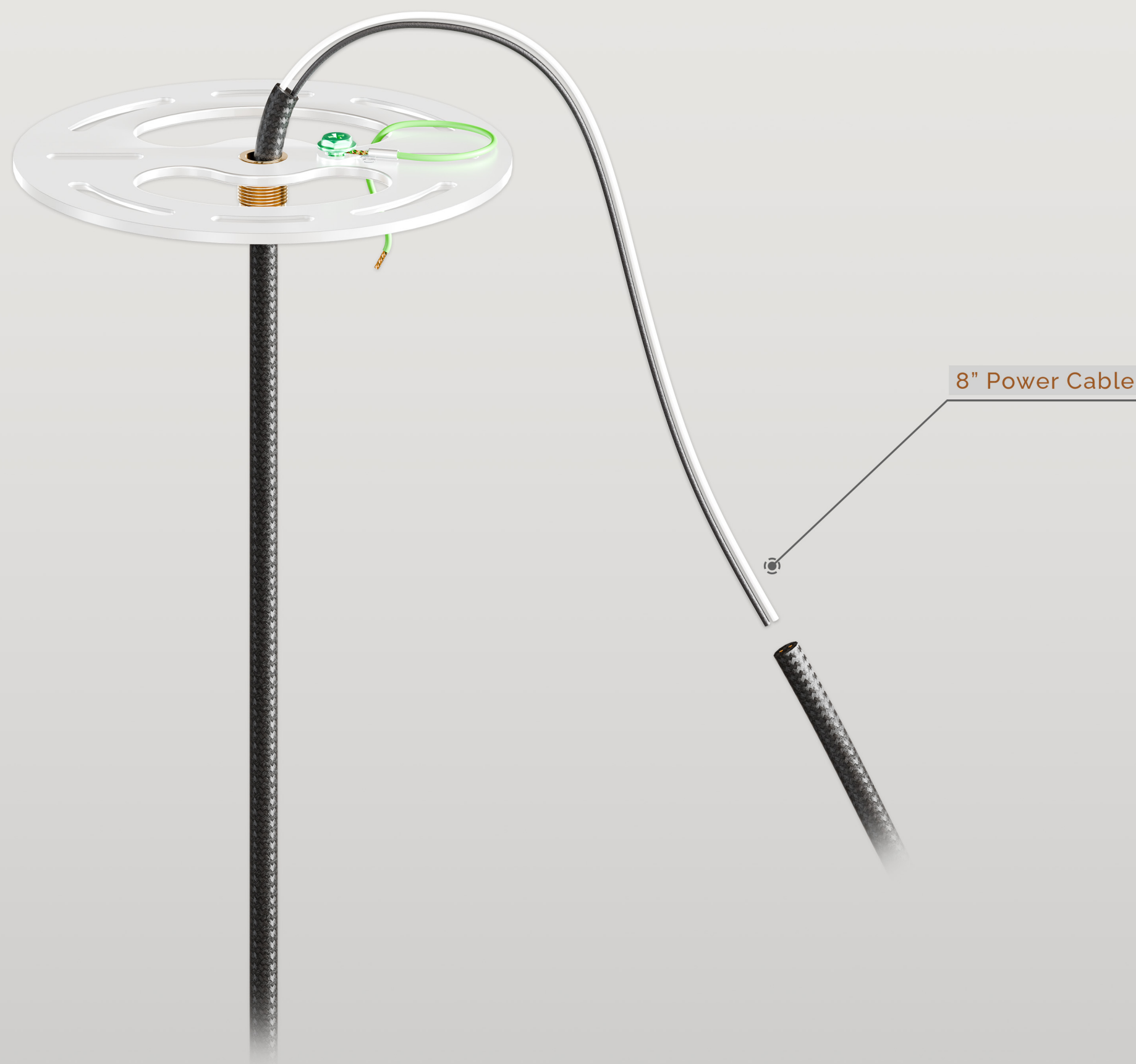


## Step 6

NÖRSKA

Once the desired height is confirmed, trim the cable to leave 8" extending above the top of the mounting plate. Carefully strip the outer insulation to expose the black and white internal wires.

**Note** : It's recommended to leave the cable slightly longer during the initial installation. You can always shorten it later if needed.



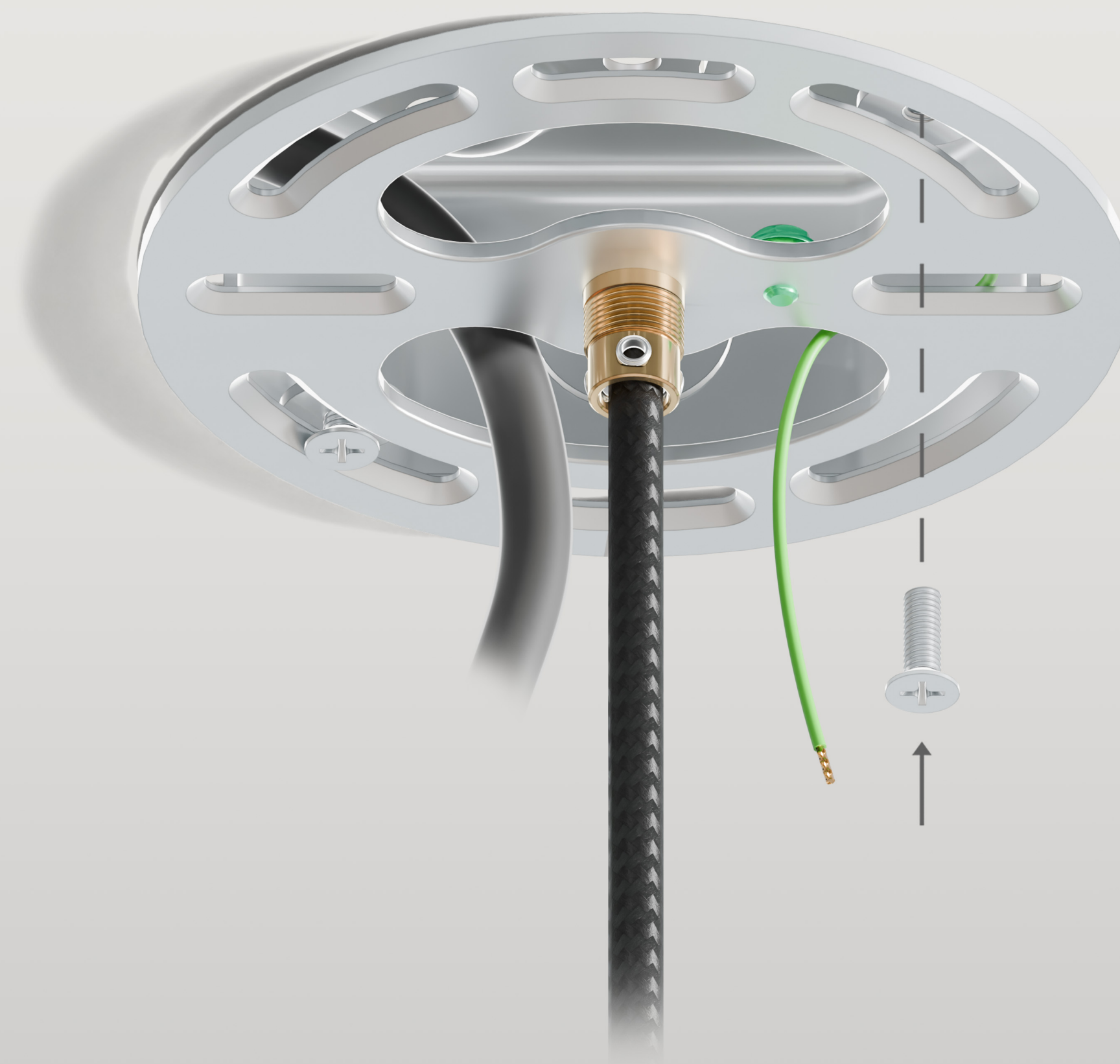




## Step 7

NÖRSKA

Mount the universal mounting plate onto the junction box using the provided 8-32 machine screws.

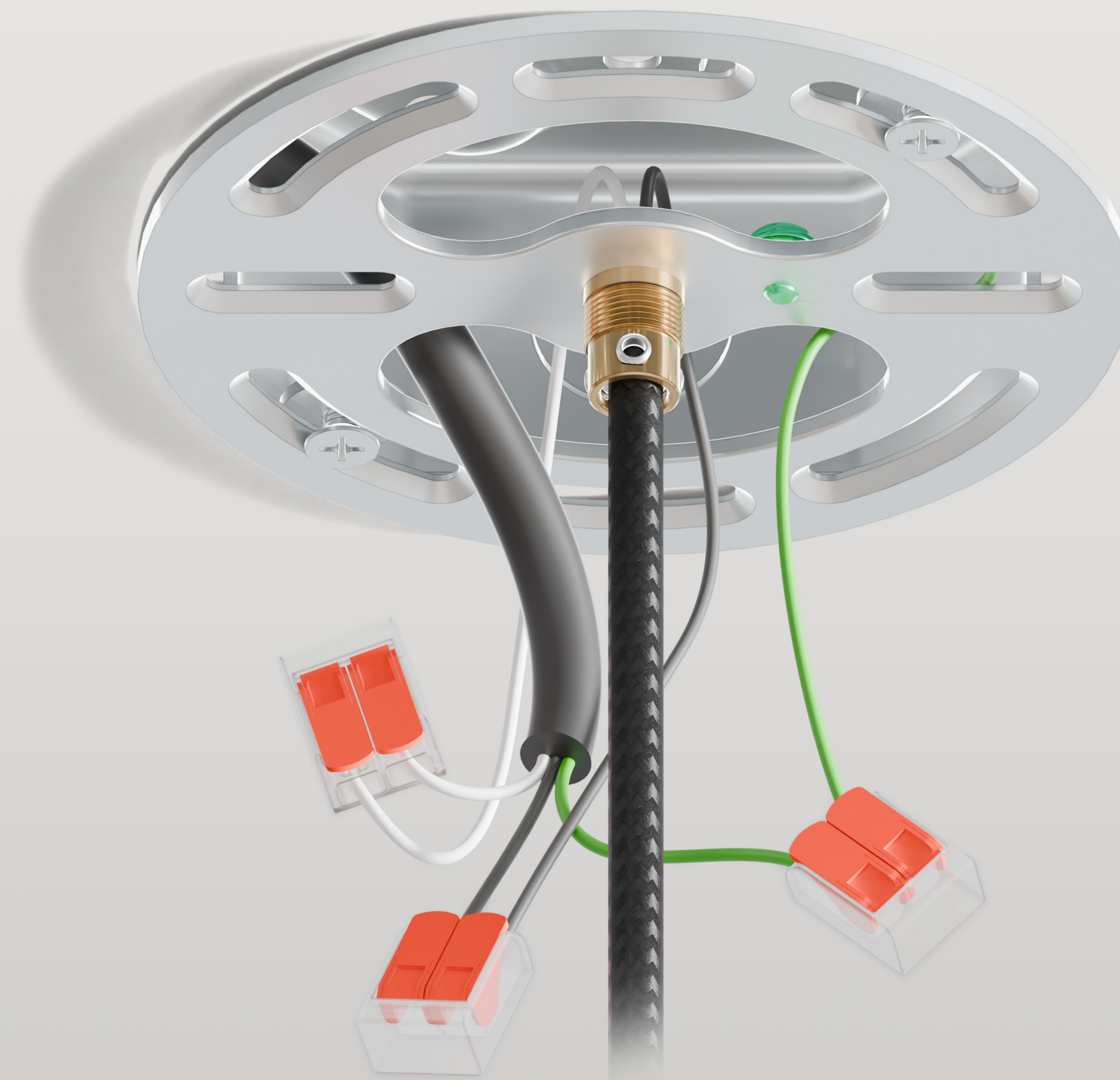




## Step 8

NÖRSKA

Connect the ground wire from the fixture to the ground wire from the junction box using a wire connector. Then, connect the black and white fixture wires to the corresponding wires from the junction box using the remaining wire connectors. Carefully tuck the wires back into the junction box.



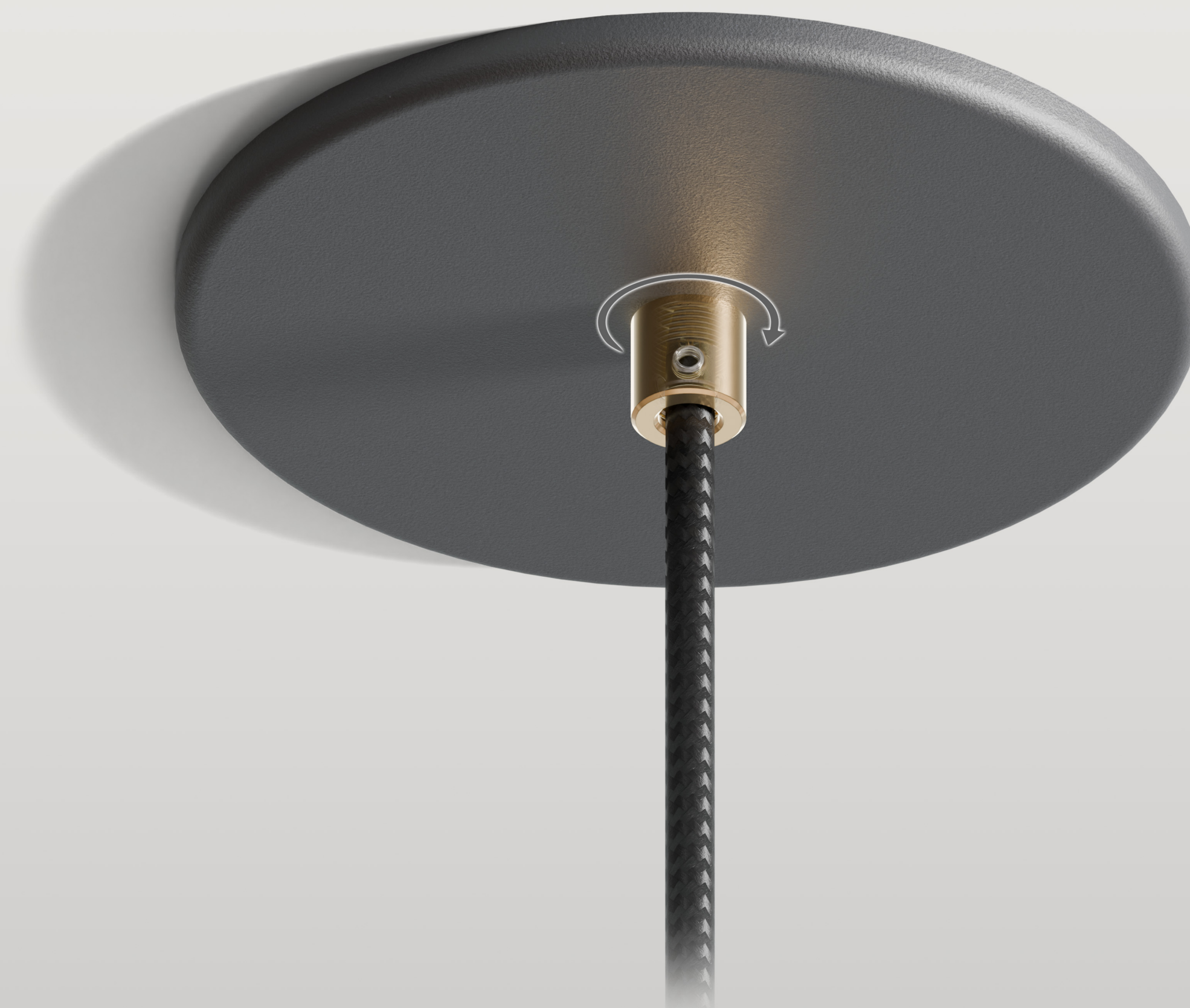




## Step 9

NÖRSKA

Slide the cup up over the cable grip and screw the barrel into place, securing it against the ceiling.





## Step 10

NÖRSKA

Unscrew the 75mm glass globe from the socket sleeve and install the G8 light bulb into the fixture socket.







## Step 11

NÖRSKA

Carefully screw the 75mm globe back onto the socket sleeve.

**Note** : Align threads properly for smooth rotation before twisting to avoid jamming. Do not overtighten the glass globe.

