



Vanity

Install Guide



DISCLAIMER :

Installation, inspection, and maintenance should be performed by qualified electricians to mitigate risks of fire or electrical shock.





Inspect Contents

NÖRSKA



1x Light Body



1x Universal Crossbar



2x Wire Connector



2x Set Screw



1x Ground Screw

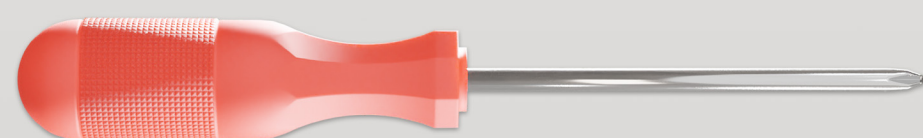


Terminology & Tools Required

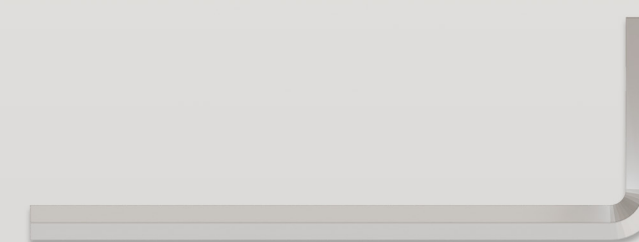
NÖRSKA



Hand Level
(Not Included)



Phillip Screw Driver
(Not Included)



2mm Allen Key
(Not Included)



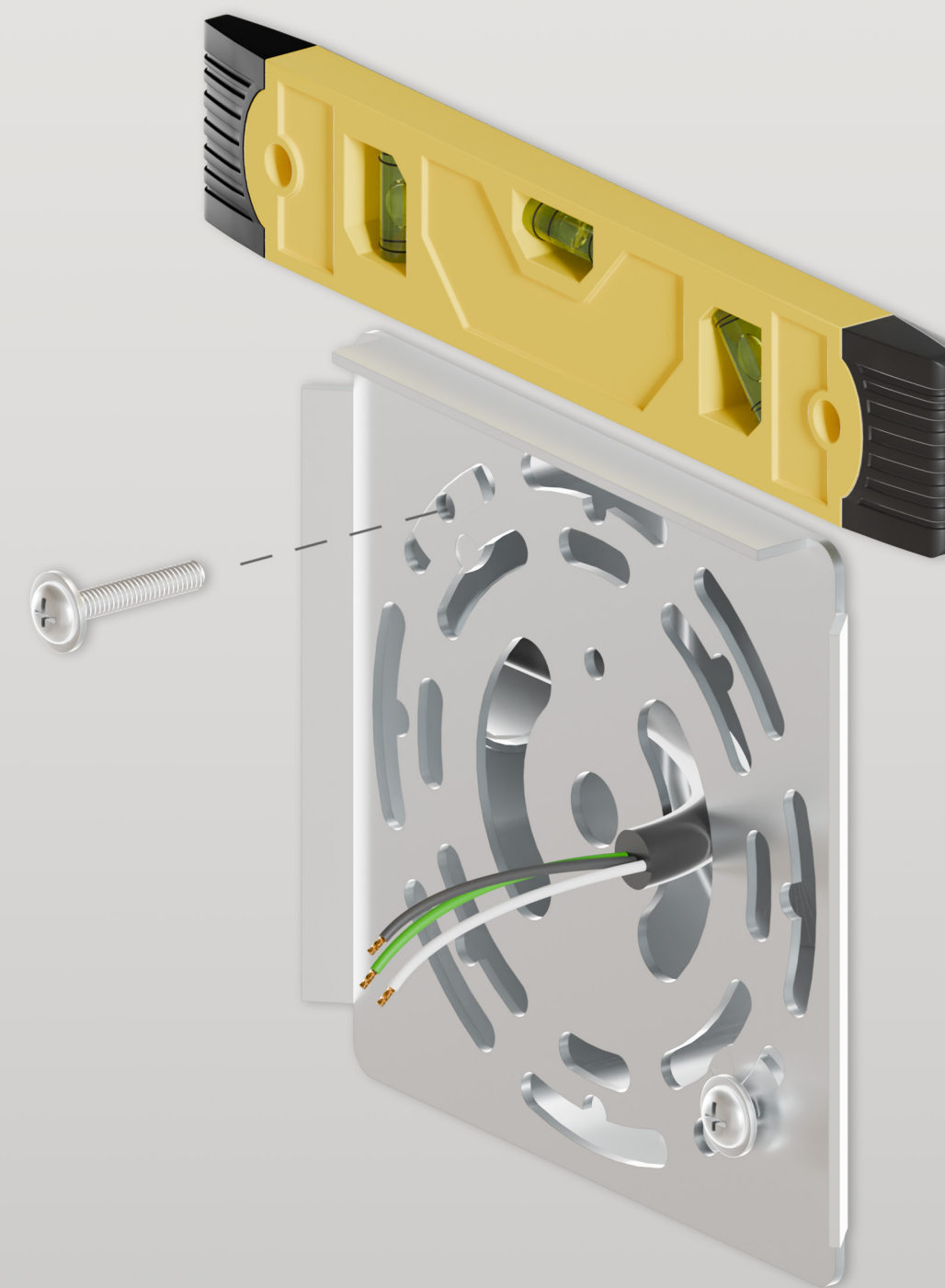
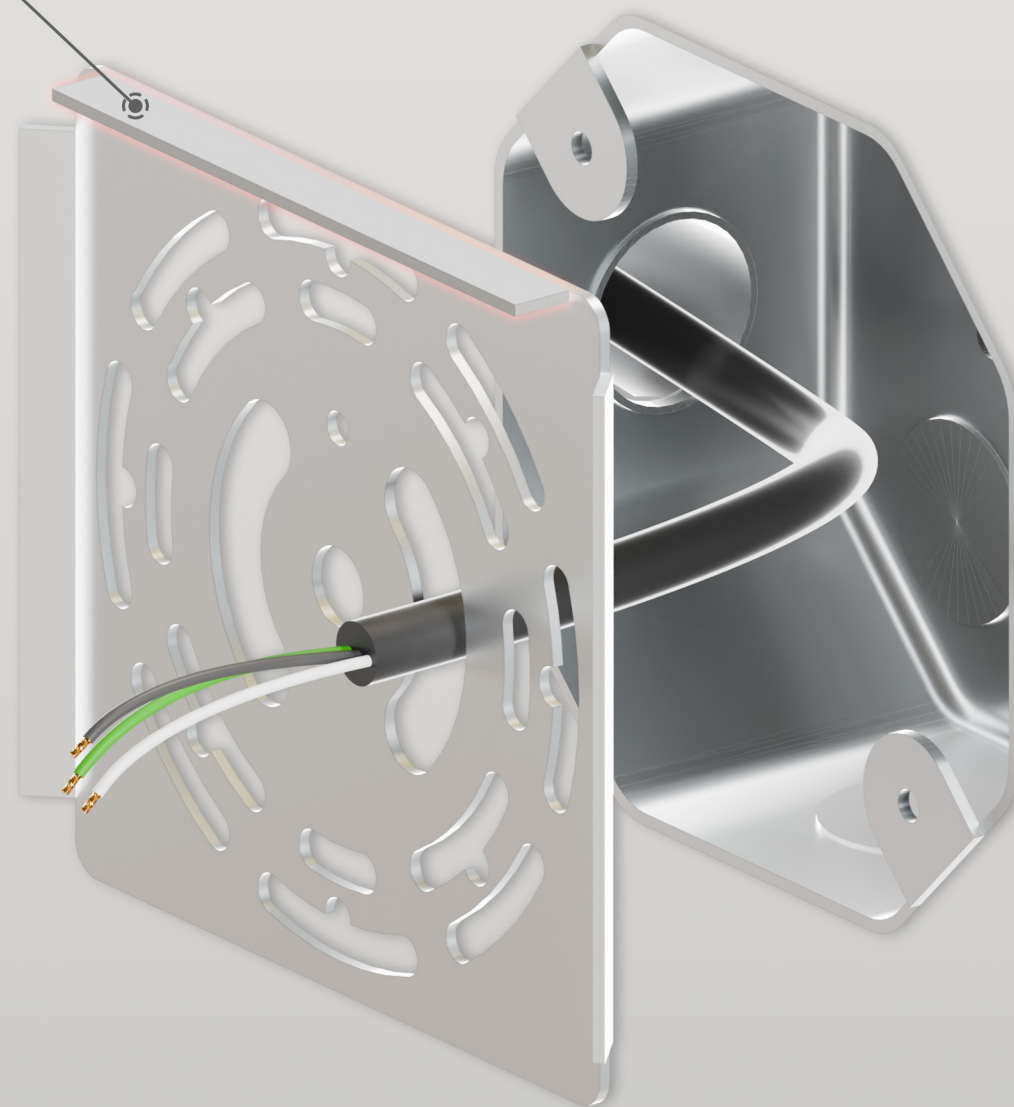
Step 1

NÖRSKA

Pull the electrical from your junction box through the universal crossbar. Mount the crossbar to your wall junction box with the provided machine screws. Ensure the top of the crossbar is level, and the flat shelf of the crossbar is on top.

Note : If mounting the vanity vertically, place the shelf to one side.

Shelf





Step 2

NÖRSKA

Connect the junction box wires to the input wires of the provided LED driver. Connect the ground wire to the crossbar.

Note : Ensure junction box wires are connected to the "Input" side of the LED driver. Incorrect wiring is a fire risk.

Note : The sconce will come prewired to the "output" side of the LED driver.

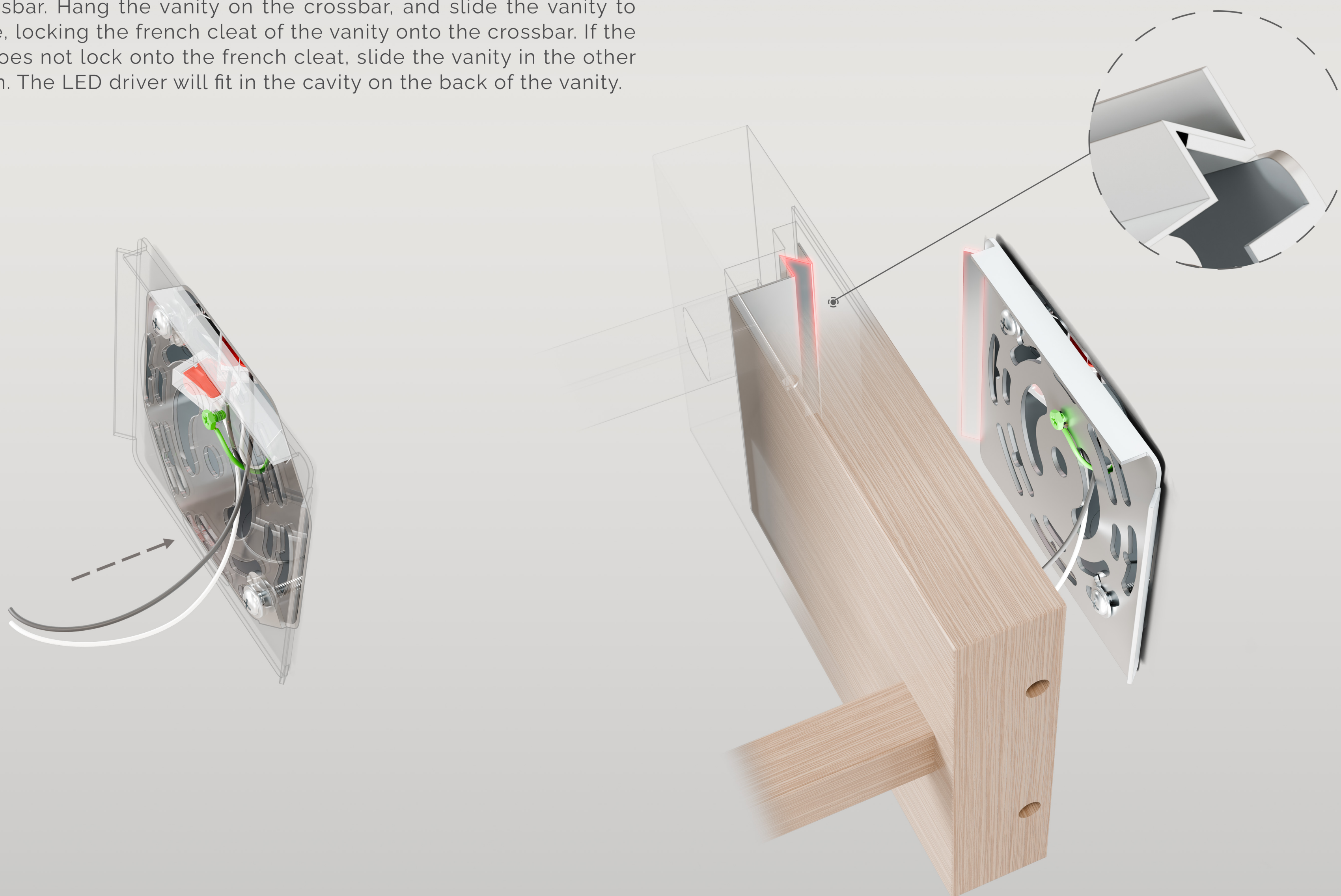




Step 3

NÖRSKA

Push the wire connection and extra wire into the junction box through the crossbar. Hang the vanity on the crossbar, and slide the vanity to one side, locking the french cleat of the vanity onto the crossbar. If the vanity does not lock onto the french cleat, slide the vanity in the other direction. The LED driver will fit in the cavity on the back of the vanity.





Step 4

NÖRSKA

Using a 2mm allen key, screw the provided set screw into the hole on the side of the vanity base plate. Tighten the set screw until it is snug. Doing so will pull the sconce tight against the wall surface.

Note : Do not over-tighten the set screw.

