



# Wall Sconce

## Install Guide



**DISCLAIMER :**

Installation, inspection, and maintenance should be performed by qualified electricians to mitigate risks of fire or electrical shock.

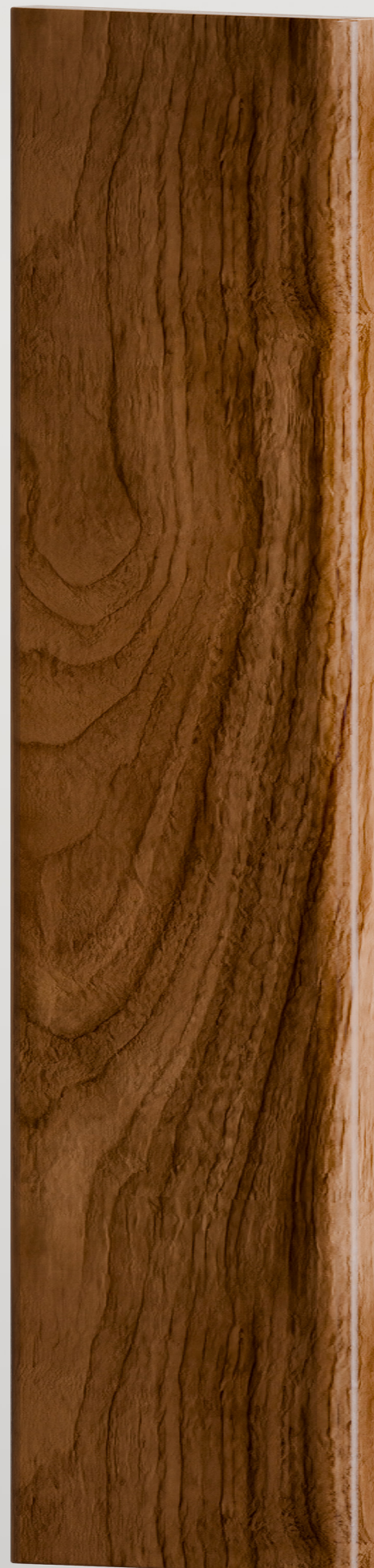






# Inspect Contents

NÖRSKA



Faceplate



Backplate



1x Barrel



Cable Grip



2x Machine Screws



Mounting Machine Screws



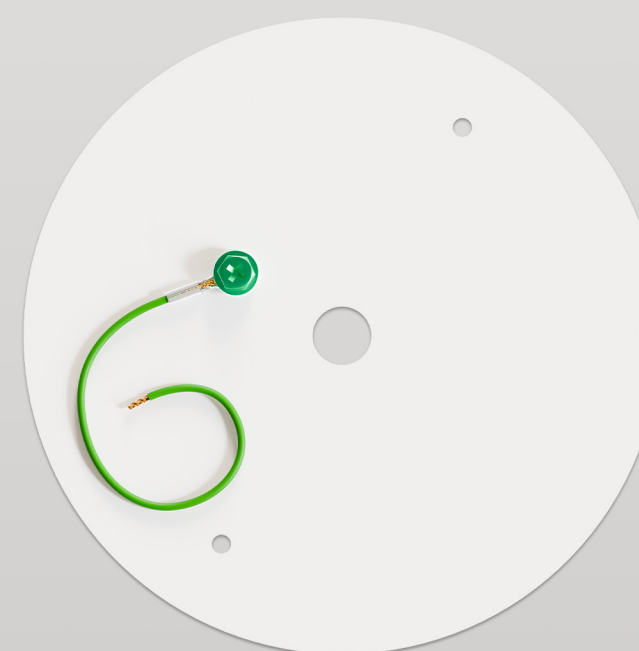
3x Set Screw



3x Wire Connector



Drywall Anchors



Junction Box Cover



C7 Lead Cable



1.5mm Allen Key





# Terminology & Tools Required

NÖRSKA

## Tools Needed :



Phillip Screw Driver



Hand Level

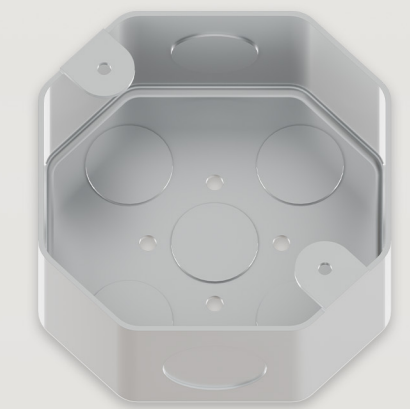
## Components :



C7 Lead Cable



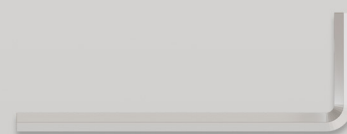
Strain Relief (Cable Grip)



Junction Box



Drill with 3/16" Drill Bit



1.5mm Allen Key



Faceplate



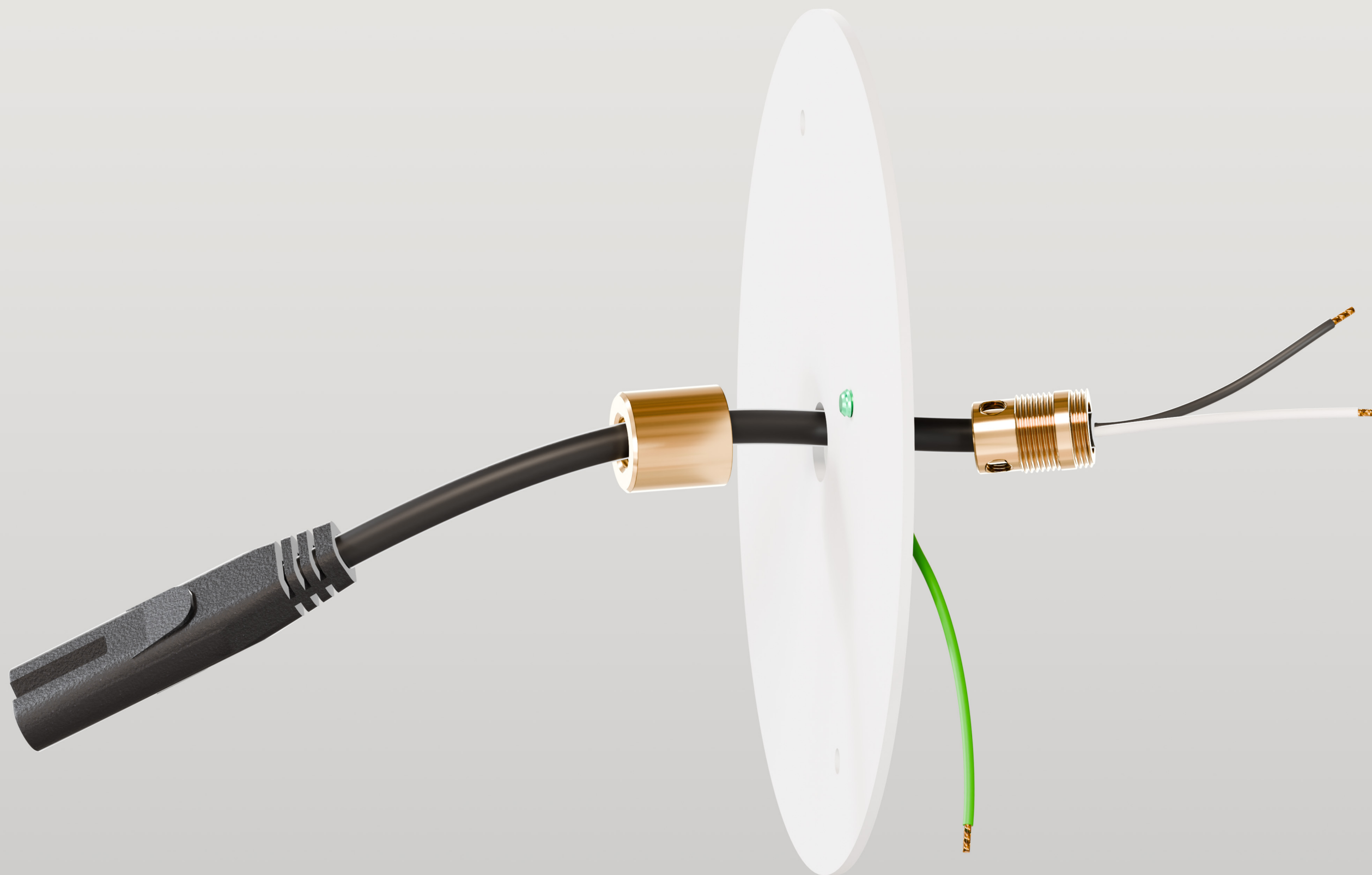
Backplate



## Step 1

NÖRSKA

Pass the C7 lead cable through the barrel, junction box cover plate, and cable grip (strain relief) as shown in the diagram.



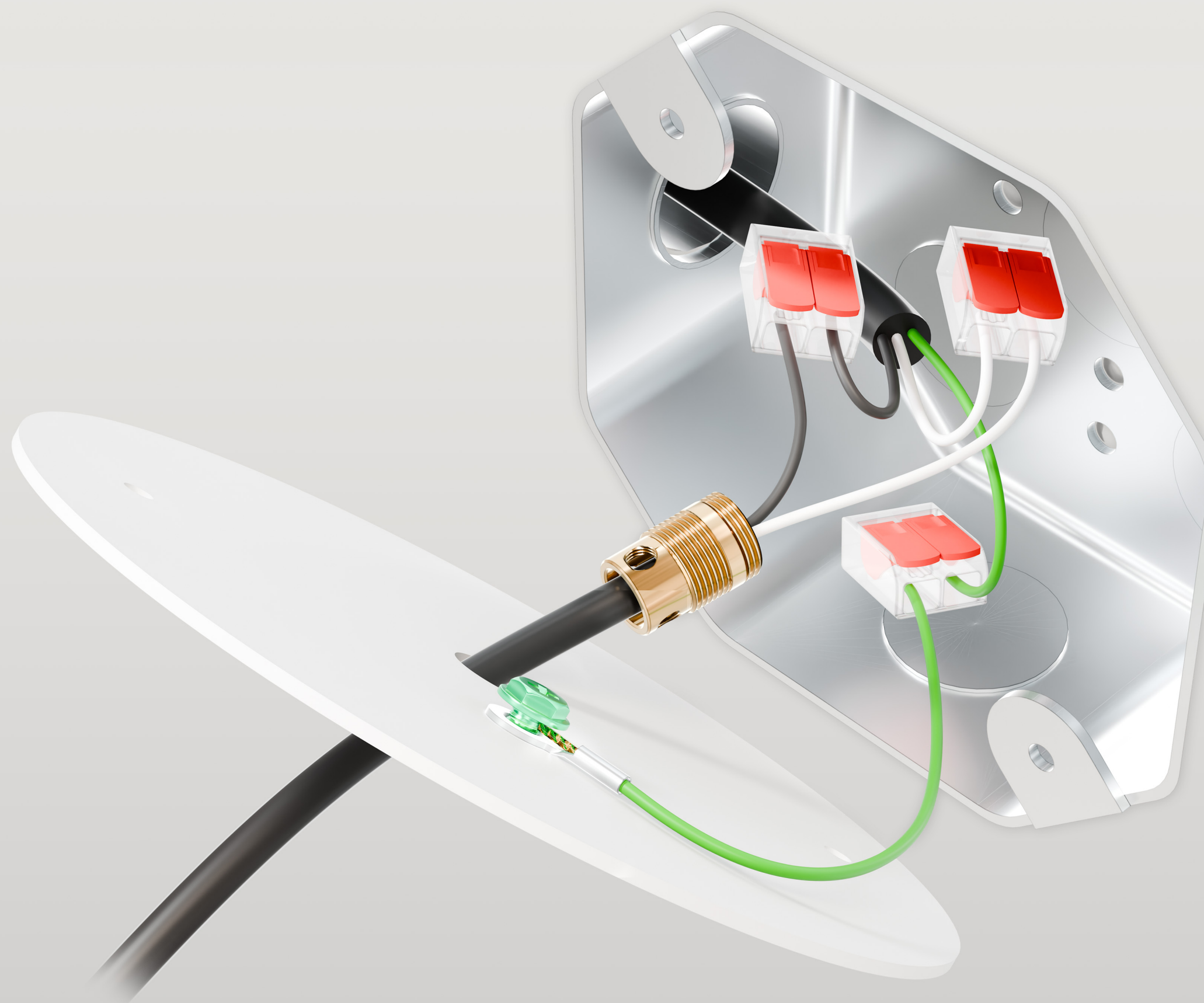




## Step 2

NÖRSKA

Connect the wires from the junction box to the wires of the C7 lead cable. Secure the ground wire from the junction box cover plate to the ground wire of the junction box.





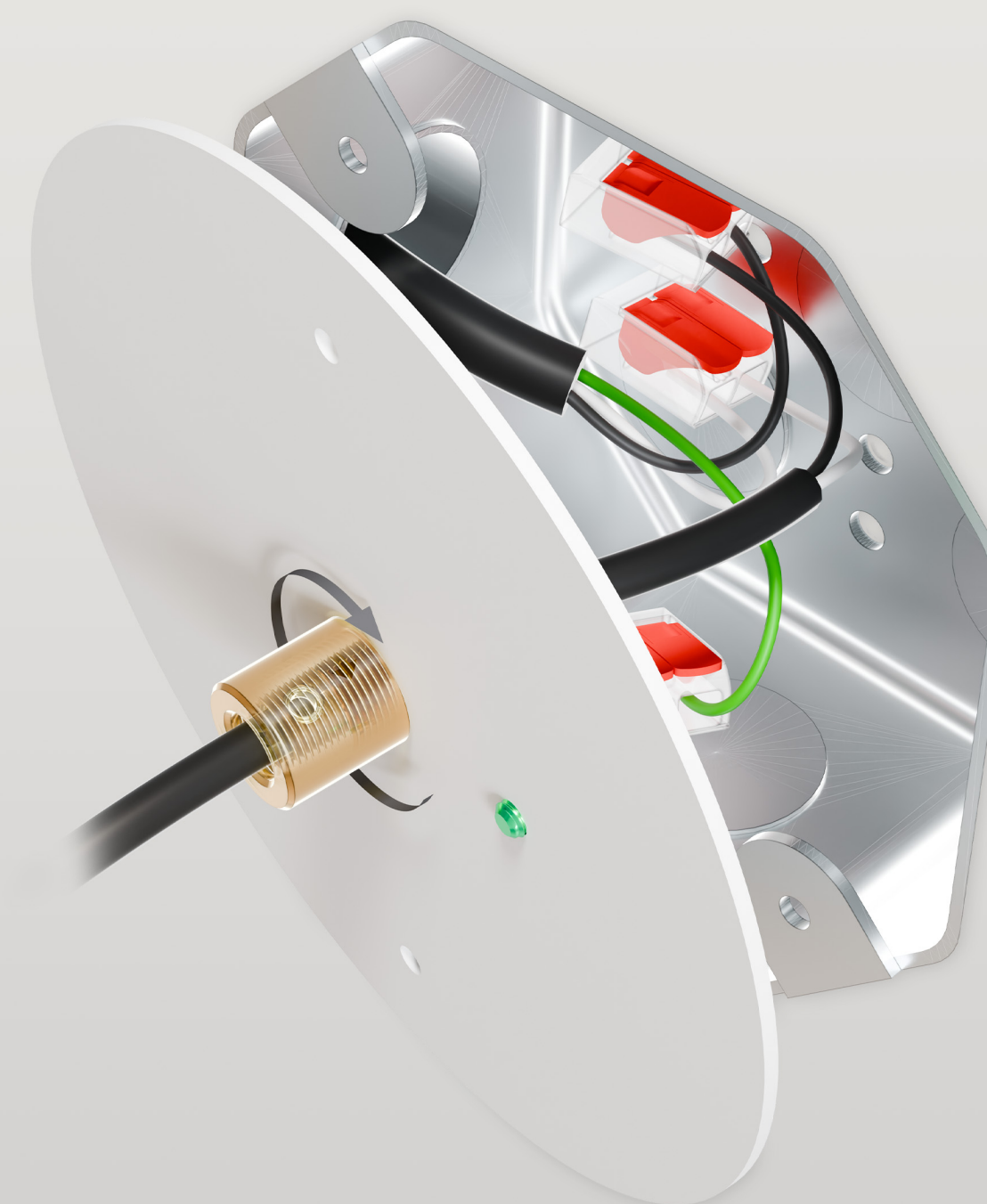
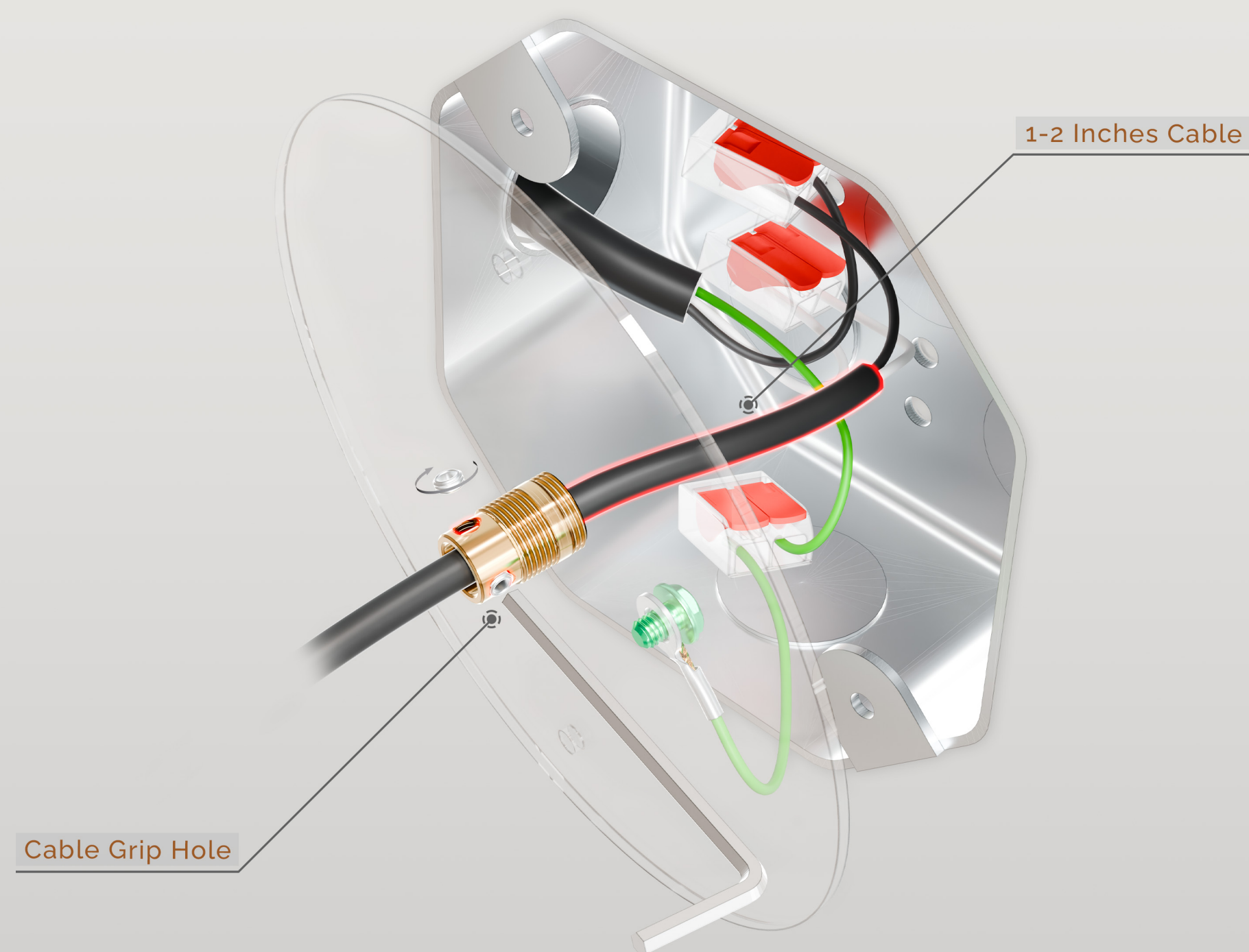


## Step 3

NÖRSKA

Pull the slack of the C7 lead cable through the cable grip until 1-2 inches of cable is visible on the back side of the cable grip. Using the provided allen key, tighten the three set screws to secure the cable. Then thread the barrel over the cable grip.

**Note :** Do not tighten set screws past flush with the cable grip. Over tightening can cause damage to the internal conductors.



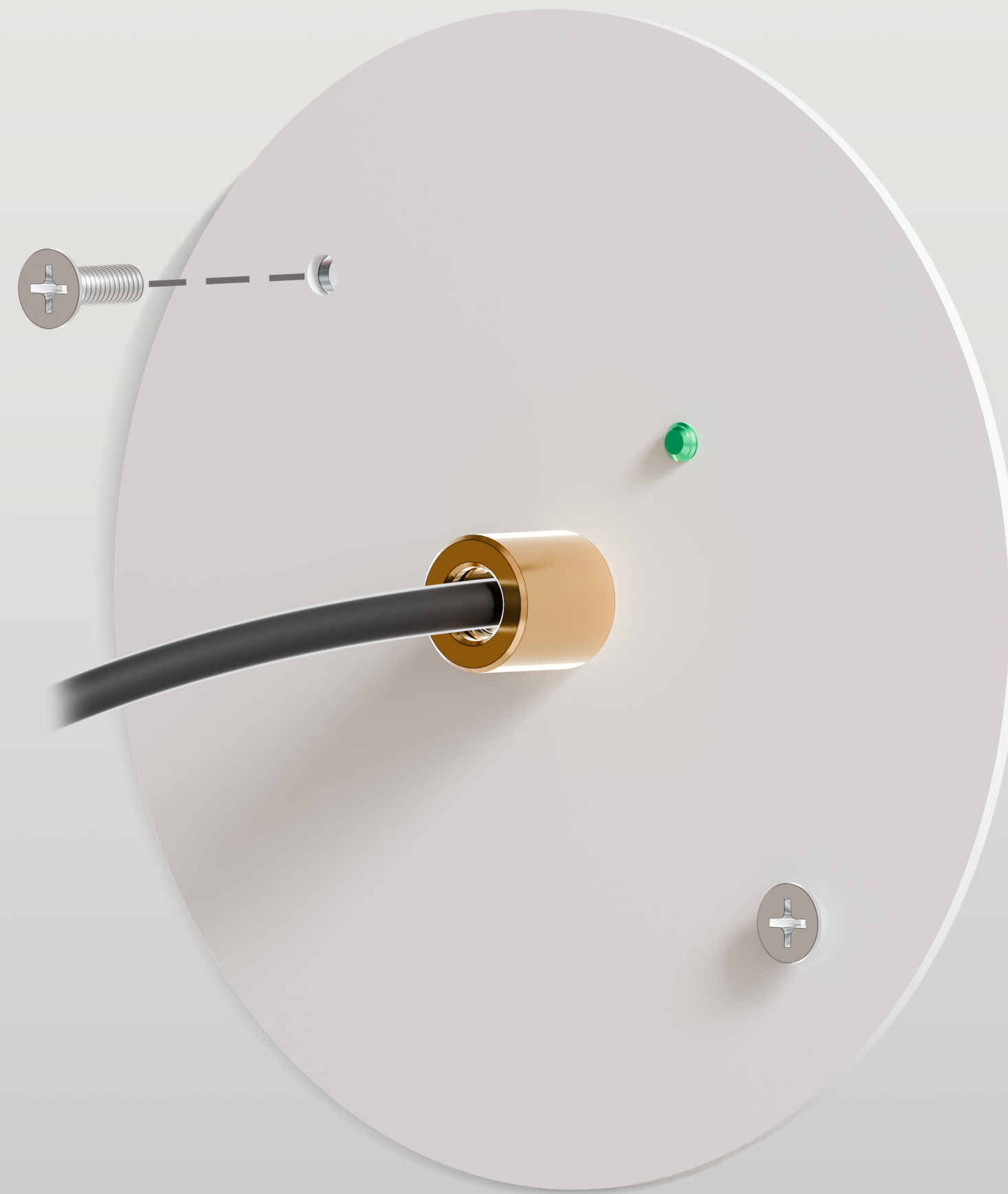




## Step 4

NÖRSKA

Attach the junction box cover plate (with the connected C7 lead cable) to the junction box using the provided machine screws.







## Step 5

Detach the scone faceplate from the backplate.  
A small upward force will release the faceplate  
from the internal clips.



NÖRSKA





## Step 6

NÖRSKA

Position the scone backplate over the junction box, ensuring the center hole aligns with the junction box cover plate. Mark the locations of the countersunk mounting holes onto the wall.



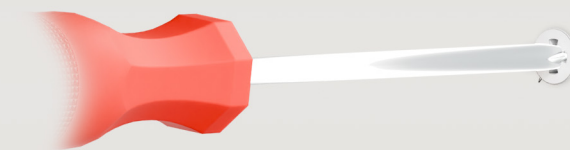
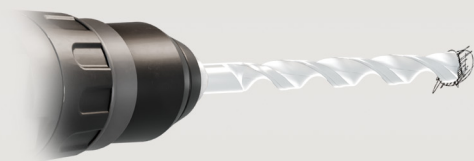




## Step 7

NÖRSKA

Using a 3/16" drill bit, pre-drill holes at the marked locations. Then, using a Phillips screwdriver, insert the drywall anchors into the drilled holes.







## Step 8

NÖRSKA

Reposition the backplate over the junction box and secure it to the wall using the provided countersunk machine screws and a Phillips screwdriver.







## Step 9

NÖRSKA

Plug the C7 lead cable into the driver located inside the backplate.







## Step 10

NÖRSKA

Align the faceplate with the backplate and press gently until it clicks into place.

**Note** : Ensure proper alignment of the faceplate clips with the backplate. Misalignment while applying pressure may damage the clips.

